



**EXPERT
RV INSPECTIONS
& SERVICE**



Don't Let Your Dream Become Your Nightmare!

INSPECTION REPORT

Inspection Site / Location
2021 Thor Hurricane 34R
Anywhere, ST6 99999

INSPECTED BY
Henri Boodee
Expert RV
Inspections &
Service LLC

INSPECTION DATE
📅 MM/DD/YYYY
🕒 08:00 AM

Table of Contents

[Cover Page](#)

[Table of Contents](#)

[Intro Page](#)

[1 RV Inspection
Status Upon Start](#)

[2 Hot Skin](#)

[3 Vehicle
Information](#)

[4 12 Volt Chassis
Lights](#)

[5 Front Cap](#)

[6 Entrance Area](#)

[7\(A\) Main Awning,
Front](#)

[7\(B\) Door Awning](#)

[8 Curbside Sidewall](#)

[9 Curbside
Slideout\(s\)](#)

[10 Rear Cap](#)

[11 Streetside
Sidewall](#)

[12 Streetside
Slideout\(s\)](#)

[13 Exterior
Appliances](#)

[14 Exterior Water
Systems](#)

[15 Propane Tanks /
Connections](#)

[16 Electrical](#)

[17 Roof Exterior](#)

[18 Appliances](#)

[19 Life Safety Items](#)

[20 Interior Water
Systems](#)

[21\(A\) Front AC](#)

[21\(B\) Rear AC](#)

[22 Interior](#)

[23 Furniture](#)

[24\(A\) Outdoor TV](#)

[24\(B\) Living Room
TV](#)

[24\(C\) Living Room
TV 2](#)

[24\(D\) Bedroom TV](#)

[24\(E\) Radio](#)

[25 Leveling System](#)

[26 Engine, Radiator,
Transmission](#)

[27 Driver Cab Area](#)

[28\(A\) Front
Curbside](#)

[28\(B\) Outside
Curbside Drive Axle](#)

[28\(C\) Inside
Curbside Drive Axle](#)

[28\(D\) Outside
Streetside Drive
Axle](#)

[28\(E\) Inside
Streetside Drive
Axle](#)

[28\(F\) Front
Streetside](#)

[29 Chassis /
Undercarriage](#)

[30 RV Status at
Inspection
Completion](#)

[31 RV Inspection
Completion
Checklist](#)

[Life Safety](#)

[Major](#)

[Minor](#)

Notice/Comment
Recommendations

General Info

Property Address Inspection Site 2021 Thor Hurricane 34R Anywhere ST 99999	Date of Inspection 9/12/2023	Report ID YYYY-MM-DD Customer Name
Customer(s) Mr. & Mrs. Customer	Time of Inspection 08:00 AM	RV Inspector

Inspection Details

Weather: Cloudy	Type of Inspection: Buyer: Pre-Purchase Inspection	Style of RV: Class A - Gasoline Chassis
RV Status: Vacant - RV Dealership	Client is Present: No	Seller / Dealer is Present: Yes, at end of inspection

**Outside Temperature - Degrees F
(lo & hi):**
51, 68

Comment Key & Definitions

Comment Key or Definitions

The following definitions of comment descriptions represent this inspection report. All comments by the inspector should be considered before purchasing this RV home.

It is recommended that any repairs be completed by a qualified RV technician.

Any recommendations by the inspector to repair or replace suggests a second opinion or further inspection by a qualified RV technician.

It is recommended that any Life Safety Issues be repaired by a qualified RV technician prior to use or occupation.

It is recommended that anything not able to be tested is evaluated by a qualified RV technician prior to use.

All costs associated with further inspection fees and repair or replacement of item, component or unit should be considered be

Expert RV Inspections & Service LLC does not recommend any technicians. [Click Here](#) for a directory of RV professionals across the United States.

Acceptable (A) = A visually observed item, component or unit and if no other comments were made then it appeared to be functioning as intended allowing for normal wear and tear.

Fair (F) = The item or its components is not in need of immediate repair but wear and tear exists and the item is not in optimum condition. Some opinions may elect to repair or replace this item now while others

may wait.

Poor (P) = The item, component or unit is not functioning as intended and replacement is recommended, or needs further inspection by a qualified RV technician.

Pass (PA) = The test for this item has passed.

Fail (FA) = The test for this item has failed.

Not Inspected (NI) = The item, unit or component was not inspected, and no representations were made as to whether or not it was functioning as intended and a statement for the reason for not inspecting may be made.

Not Present (NP) = This item, component or unit is not in this RV.

This document was prepared for the client listed on the Cover Page of this report. Any reproduction, use, or resale of this document by individuals other than who is listed on the report cover page, or their assigns, is not supported by the inspector and company.

For all motorized RV's, it is our recommendation to have the engine and all associated running gear, chassis, and systems (e.g., radiator, transmission, etc.) inspected by a certified ASME or similar mechanic.

Note: Given the potential severity of damage due to water intrusion or penetration, all potentially compromised areas that could result in water damage are categorized as "major" even if it appears to be or results in a 'minor fix'. It is recommended these areas be repaired by a certified RV technician to prevent further/future damage or water intrusion.

Results at a glance

401

Items Inspected

Total number in report.

29

Summary Comments

Total number in report.

322

Styles & Materials

Total number in report.

7

Videos

Total number in report.

291

Photos

Total number in report.

1. RV Inspection Status Upon Start

Styles & Materials: RV Inspection Status Upon Start

RV Keys on Site:

Yes - Inside RV in Open View

RV Entrance Door(s) Locked On Arrival:

No

RV Leveling / Auto-Level Set:

No

Motorhome Parking Brake Set:

No

Streetside Slideout(s) Status:

Retracted

Curbside Slideout(s) Status:

Retracted

Awning(s) Status:

Retracted

Pedestal Power Breaker On:

Yes

Power Cord Attached to RV and Power Pedestal:

No

Battery Disconnect Switch Status:

Connected

RV Is Winterized:

No

City Water Hose Attached to City Water Inlet:

No

Sewer Hose Connected to Drain Valve:

No Sewer Hose Present

Propane DOT / ASME Tank(s) Valve(s) in On Position:

Yes

Air Conditioner Powered On:

No

Furnace(s) Powered On:

No

Water / Hydronic Heater Powered On:

No

Water Pump Powered On:

No

Refrigerator Powered On:

No

Evidence of Water Leaks External:

No

Evidence of Water Leaks Internal:

No

Evidence of Engine / Transmission / Hydraulic Fluid Leaks:

No

Items: RV Inspection Status Upon Start

1.0 Exterior RV Condition at Inspection Start
Acceptable

Exterior images of RV upon arrival



1.0 Item 1 (Picture)
curbside upon arrival



1.0 Item 2 (Picture)
front upon arrival



1.0 Item 3 (Picture)
street side upon arrival



1.0 Item 4 (Picture)
rear upon arrival

1.1 Interior RV Condition at Inspection Start
Acceptable

Interior images of RV on arrival



1.1 Item 1 (Picture)
driver's area on arrival



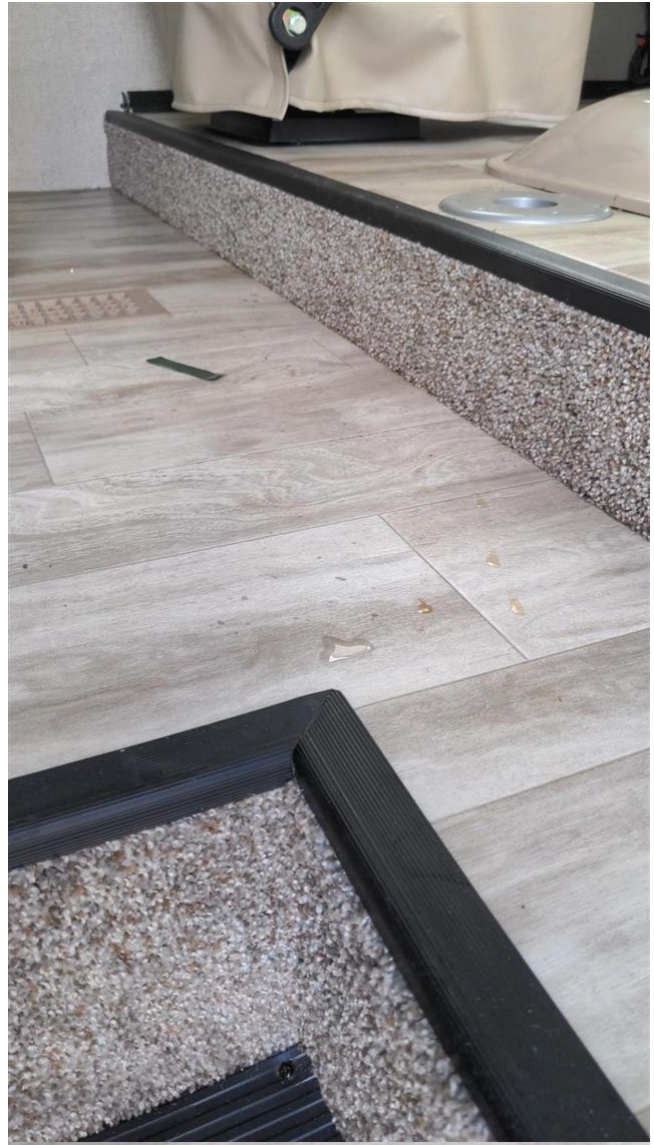
1.1 Item 2 (Picture)
facing rearward on arrival



1.1 Item 3 (Picture)
bedroom on arrival



1.1 Item 4 (Picture)
facing forward on arrival



1.1 Item 5 (Picture)
water on floor on arrival



1.1 Item 6 (Picture)
floor staining on arrival



1.1 Item 7 (Picture)
floor staining near stove

2. Hot Skin



Description

NOTE: Hot Skin is when stray or leak voltage from the 120 voltage AC system is somehow redirected from its normally safe path to some metal component(s) of your RV.

NOTE: Most hot skin issues may not be a direct short of power to ground but rather a high resistive short. In many cases, they may not trip the circuit breakers or blow fuses. However, the frame, chassis, copper tubing and metal trim pieces on the coach can conduct voltage.

NOTE: Any reading below 5 volts is considered safe. Conversely, any reading above 5 volts can be dangerous.

Items: Hot Skin

2.0	Hot Skin Test Overview
	Acceptable

- (1) Less than 5.0 volts AC was found on the RV steps during the performance of the Hot Skin Test.
- (2) Less than 5.0 volts AC was found on the RV chassis during the performance of the Hot Skin Test.

2.1 Shore Power Source Outlet Test
Acceptable

The shore power outlet was tested with a Progressive Industries portable tester module. No abnormal findings were discovered.



2.1 Item 1 (Picture)
Shore Power Outlet Polarity

2.2 Voltage On Steps
Acceptable

Less than 5.0 volts AC was found on the RV steps during the performance of the Hot Skin Test.



2.2 Item 1 (Picture)
steps voltage



2.2 Item 2 (Picture)
door voltage

2.3 Voltage On Handles

Acceptable

Less than 5.0 volts AC was found on the RV handles during the performance of the Hot Skin Test.



2.3 Item 1 (Picture)

2.4 Voltage On Windows

Acceptable

Less than 5.0 volts AC was found on the RV windows during the performance of the Hot Skin Test.

2.5 Voltage On Chassis

Acceptable

Less than 5.0 volts AC was found on the RV chassis during the performance of the Hot Skin Test.



2.5 Item 1 (Picture)
chassis voltage

It is recommended that a qualified RV technician or appropriate service person investigate Life Safety Issues further and correct as needed prior to use.

It is recommended that a qualified RV technician or appropriate service person investigate all issues further and correct as needed.

Expert RV Inspections & Service LLC does not recommend any technicians or repair facilities.

All costs associated with further inspection fees and repair or replacement of item, component or unit should be considered before you purchase.

3. Vehicle Information



Description

NOTE: The inspector has verified the items in this section.

Styles & Materials: Vehicle Information

VIN Number:

Photo Included

VIN Number : 1234567890ABCDEFG

VIN Data Plate Location:

Near Driver's Seat

GVWR (Gross Vehicle Weight Rating):

Maximum Weight Of Vehicle Loaded

lbs/kg : 23,000 lbs

Cargo Capacity:

Maximum Cargo Capacity Including Water and Fuel

lbs/kg : 3,672 lbs

Date Of Manufacture:

October

Year : 2020

Manufacturer Name / Location:

Thor / Elkhart, IN

Brand Name:

Manufacturer's Brand Name

Brand : Hurricane

Model Number:

Floorplan Designation

Floorplan : 34R

Frame Manufacturer:

Ford

Frame Manufacture Date:

October

Year : 2020

State Inspection Current:

Not Required

Seal Number:

RVIA

Number : 9999999

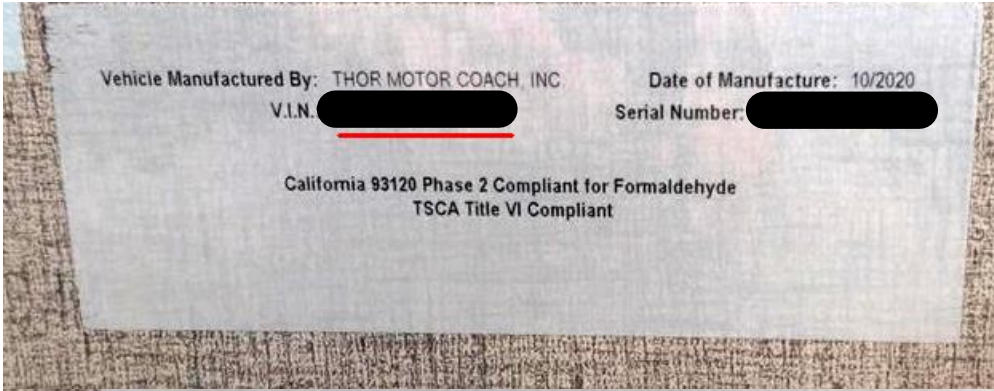
License Plate Expiration:

Dealer Plates / NP

Items: Vehicle Information

3.0 VIN Data Plate

VIN Data Plate



3.0 Item 1 (Picture)
VIN data plate

3.1 Dealer Stock Number Sticker

Vehicle Dealer Stock Number



3.1 Item 1 (Picture)
dealer stock number

3.2 Tire Data Plate

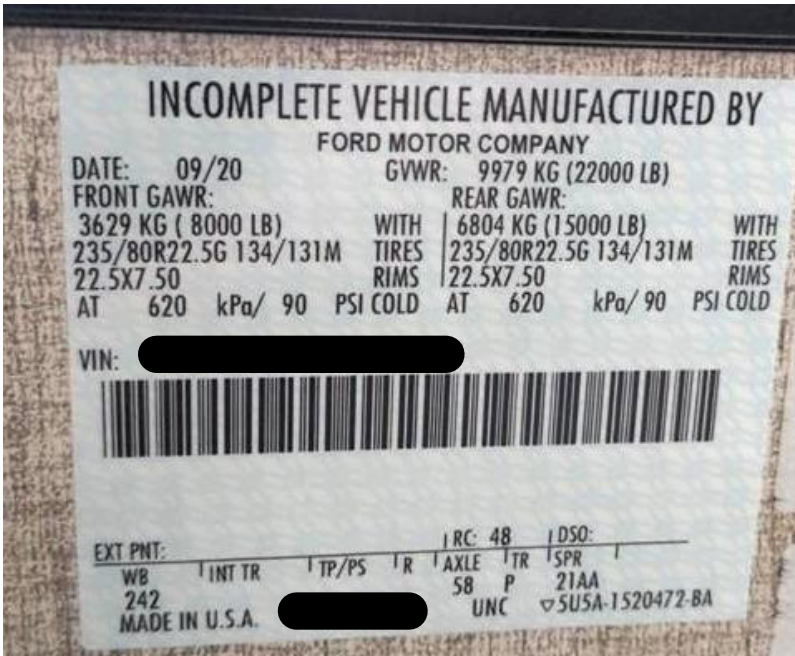
Tire Data Plate



3.2 Item 1 (Picture)

3.3 Incomplete Vehicle Data Plate (Motorhomes only)

Incomplete vehicle data plate

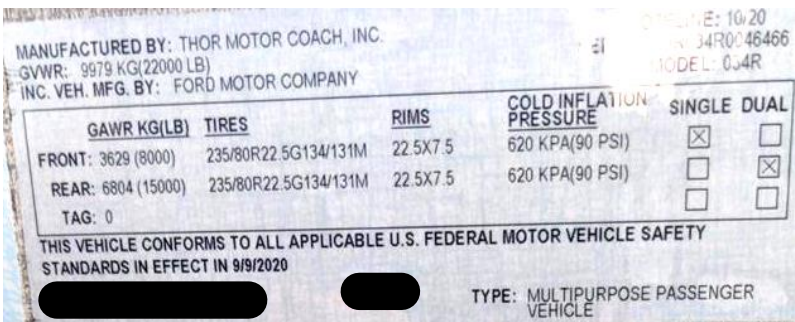


3.3 Item 1 (Picture)

incomplete vehicle data plateincomplete vehicle data plate

3.4 Cargo Carry Capacity Data Plate

Cargo Carry Capacity Data Plate



3.4 Item 1 (Picture)

cargo capacity data plate

3.5 RVIA Seal

RVIA Seal located next to entrance door



3.5 Item 1 (Picture)
RVIA seal

3.6 License Plate

License Plate



3.6 Item 1 (Picture)
no license plate present

3.7 NHTSA Recalls

Current and prior recalls may be found on the NHTSA website: <https://www.nhtsa.gov/recalls>

Current recalls are:

1 Unrepaired Recalls: VIN [REDACTED]

Manufacturer Recall Number 21S17

NHTSA Recall Number 21V202

Recall Status Recall Incomplete

Summary

AN INADEQUATE AMOUNT OF REAR AXLE LUBRICANT MAY RESULT IN REAR WHEEL BEARING DAMAGE POTENTIALLY LEADING TO BEARING SEIZURE. BEARING SEIZURE MAY LEAD TO REAR AXLE OR DRIVESHAFT FAILURE.

Safety Risk

IN THE EVENT OF REAR AXLE OR DRIVESHAFT FAILURE, CUSTOMERS MAY EXPERIENCE LOSS OF VEHICLE MOTIVE POWER, LOSS OF TRANSMISSION PARK FUNCTION, AND LOSS OF PARKING BRAKE FUNCTION, INCREASING THE RISK OF A CRASH.

Remedy

OWNERS WILL BE NOTIFIED BY MAIL AND INSTRUCTED TO TAKE THEIR VEHICLE TO A FORD OR LINCOLN DEALER. ALL VEHICLES WILL BE INSPECTED FOR LUBRICANT LEVEL AND EVALUATED TO DETERMINE IF BEARING REPLACEMENT IS NECESSARY. THERE WILL BE NO CHARGE FOR THIS SERVICE. FORD IS EXCLUDING REIMBURSEMENT FOR COSTS BECAUSE THE ORIGINAL WARRANTY PROGRAM WOULD PROVIDE FOR A FREE REPAIR FOR THIS CONCERN. FORD WILL FORWARD A COPY OF THE NOTIFICATION LETTERS TO DEALERS TO THE AGENCY WHEN AVAILABLE.

If the manufacturer has failed or is unable to remedy this safety recall for your vehicle in a timely manner, please contact the NHTSA Vehicle Safety Hotline at: 1-888-327-4236 or TTY: 1-800-424-9153 or file an online complaint with NHTSA.

3.8 Manufacturer Specific Recalls

(1) No specific recalls identified

(2) Manufacturer recalls may be identified from the manufacturers website(s).

Recalls identified are:

3.9 RV Floorplan Image

Illustrated Floorplan of Unit



3.9 Item 1 (Picture) Floorplan

It is recommended that a qualified RV technician or appropriate service person investigate Life Safety Issues further and correct as needed prior to use.

It is recommended that a qualified RV technician or appropriate service person investigate all issues further and correct as needed.

[Expert RV Inspections & Service LLC](#) does not recommend any technicians or repair facilities.

All costs associated with further inspection fees and repair or replacement of item, component or unit should be considered before you purchase.

4. 12 Volt Chassis Lights



Description

NOTE: 12 volt chassis lights are the lights that are connected to the 12 volt chassis electrical system.

Styles & Materials: 12 Volt Chassis Lights

Marker Light(s) Illuminates:

Yes

Items: 12 Volt Chassis Lights

4.0	12 Volt Chassis Lights Overview
	Acceptable

Overview of the 12 volt chassis lights - all chassis lights function as designed

4.1 Front Clearance Lights (front upper)

Acceptable

The front clearance lights all illuminate acceptably.



4.1 Item 1 (Picture)
front clearance lights

4.2 Headlights
Acceptable

(1) Overview of the headlights



4.2 Item 1 (Picture)
headlights

(2) Both headlights illuminate acceptably and the bezels are clear.

4.3 High Beam Headlights
Acceptable

(1) Overview of the 12 volt chassis lights



4.3 Item 1 (Picture)
high beam headlightshigh beam headlights

(2) Both headlight high beam lamps illuminate acceptably.

4.4	Fog Lights (separate under Headlamps) Acceptable
------------	--

(1) Overview of the 12 volt chassis lights



4.4 Item 1 (Picture)
fog lamps

(2) Both fog light lamps illuminate acceptably and the bezels are clear.

4.5 Hazard Lights
Acceptable

(1) The hazard lights illuminate and function acceptably.



4.5 Item 1 (Picture)
hazard lights operational



4.5 Item 2 (Picture)
front hazard lights operational

(2) Overview of the 12 volt chassis lights

4.6 Turn Signals
Acceptable

(1) The turn signals illuminate acceptably and the bezels are clear.



4.6 Item 1 (Picture)
Left turn signal operational



4.6 Item 2 (Picture)
Right turn signal operational

(2) Overview of the 12 volt chassis lights

4.7 Curbside Marker Lights (lower sidewall)

Acceptable

The curbside marker lights illuminate acceptably and the bezels are clear.



4.7 Item 1 (Picture)
curbside marker lights

4.8 Rear Clearance Lights (rear upper)

Acceptable

The rear clearance lights illuminate acceptably and the bezels are clear.



4.8 Item 1 (Picture)
rear clearance lights

4.9 Tail Lights
Acceptable

(1) Both tail lights illuminate acceptably and the bezels are clear.



4.9 Item 1 (Picture)

(2) Overview of the 12 volt chassis lights

4.10 Brake Lights
Acceptable

(1) The brake lights illuminate acceptably and the bezels are clear.



4.10 Item 1 (Picture)
brake lights

(2) Overview of the 12 volt chassis lights

4.11 License Plate Light
Acceptable

(1) The license plate lights illuminate acceptably.

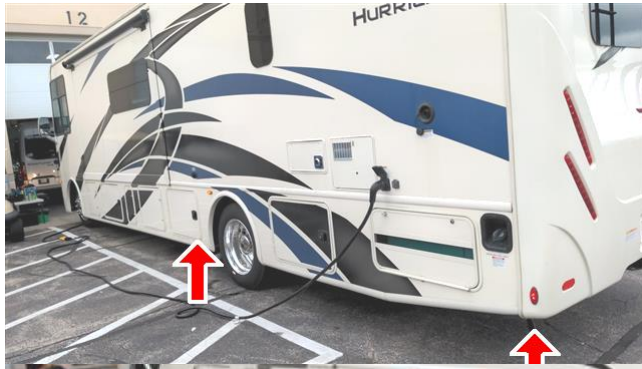


4.11 Item 1 (Picture)
license plate lights

(2) Overview of the 12 volt chassis lights

4.12	Streetside Marker Lights (lower sidewall) Acceptable
-------------	--

The streetside marker lights illuminate acceptably and the bezels are clear.



4.12 Item 1 (Picture)
street side marker lights

4.13	Other 12 Volt Lighting present Not Present
-------------	--

No other 12 volt lights were identified

It is recommended that a qualified RV technician or appropriate service person investigate Life Safety Issues further and correct as needed prior to use.

It is recommended that a qualified RV technician or appropriate service person investigate all issues further and correct as needed.

[Expert RV Inspections & Service LLC](#) does not recommend any technicians or repair facilities.

All costs associated with further inspection fees and repair or replacement of item, component or unit should be considered before you purchase.

5. Front Cap



Description

NOTE: The inspector has verified the items in this section.

Styles & Materials: Front Cap

Wall Surface Type:

Paint with Decals

Number of Windows incl. Windshield:

One

Windshield Type:

Single Windshield

Windshield Wipers Location:

Below Windshield

Mirrors with Sideview Cameras:

Yes, Attached to Mirror Housing

Engine Compartment Door Latch Type:

Keyed Lock

Protective Film:

No

Items: Front Cap

5.0 Front Cap Overview
Acceptable

RV Front Cap Overview



5.0 Item 1 (Picture)
front cap overview

5.1 Front Cap Condition
Acceptable

The appearance and condition of the front cap, finish and decals are consistent with the age of the RV.

5.2 **Windshield**
Acceptable

The windshield is intact with no evidence of damage noted.



5.2 Item 1 (Picture)
windshield

5.3 Windshield Wipers
Acceptable

The windshield wipers were operational and in good condition.



5.3 Item 1 (Picture)
windshield wipers operational

5.4 Mirrors
Acceptable

The exterior mirror housings are intact with wear consistent with the age of the RV; the mirror glass is without damage on both sides.



5.4 Item 1 (Picture)
passenger mirror



5.4 Item 2 (Picture)
driver's mirror

5.5 Paint & Decals
Acceptable

The condition of the paint and decals on the front cap is consistent with the age of the RV.

5.6 Engine Compartment Door

Acceptable

The engine door's appearance is consistent with the age of the RV. It opens and closes acceptably.



5.6 Item 1 (Picture)
engine compartment door closed



5.6 Item 2 (Picture)
engine compartment door open

5.7 Front Bumper

Acceptable

Overview of front bumper



5.7 Item 1 (Picture)
front bumper

It is recommended that a qualified RV technician or appropriate service person investigate Life Safety Issues further and correct as needed prior to use.

It is recommended that a qualified RV technician or appropriate service person investigate all issues further and correct as needed.

Expert RV Inspections & Service LLC does not recommend any technicians or repair facilities.

All costs associated with further inspection fees and repair or replacement of item, component or unit should be considered before you purchase.

6. Entrance Area



Description

NOTE: The inspector has verified the items in this section.

Styles & Materials: Entrance Area

Exterior Grab Bar - Type:

Grab Handle

Interior Grab Bar - Type:

Not Present

Door Type:

Fiberglass

Metal Sheet

Step Type:

Electric

Number of Steps:

One

Items: Entrance Area

6.0 Entrance Area Overview

Acceptable

Entrance Area Overview



6.0 Item 1 (Picture)
entrance area overview

6.1 Exterior Grab Bar
Acceptable

Overview of the grab bar.



6.1 Item 1 (Picture)
exterior grab bar

6.2 Interior Grab Bar
Acceptable

Interior grab bar



6.2 Item 1 (Picture)
interior grab bar

6.3 Main Door
Acceptable

Overview of the interior and exterior of the entrance door.



6.3 Item 1 (Picture)
door exterior



6.3 Item 2 (Picture)
door interior

6.4

Main Screen Door

Acceptable



**MINOR
ISSUE**

Overview of the screen door.

The screen door does not remain attached to the entry door by default. When the screen door is attached to the door, and the door is closed, when the the door is reopened, the screen door remains closed.

The electric step does not operate unless the screen door is opened.

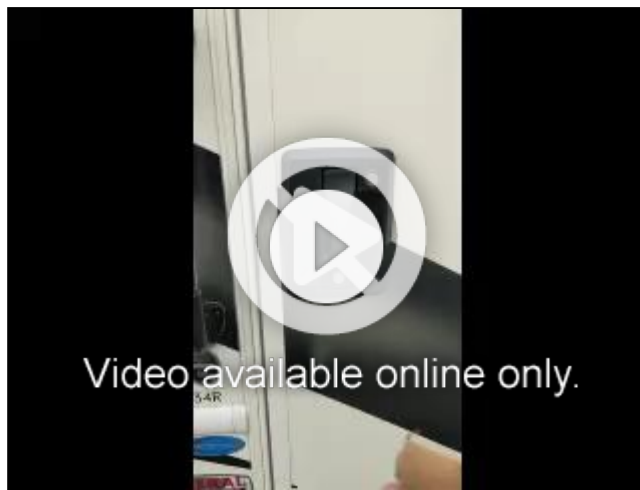
This may be a feature of the coach by design of the manufacturer, however the inspector recommends that the door mechanism be evaluated by a qualified RV technician for any issues.



6.4 Item 1 (Picture)
screen door closed



6.4 Item 2 (Picture)
screen door open and attached to door



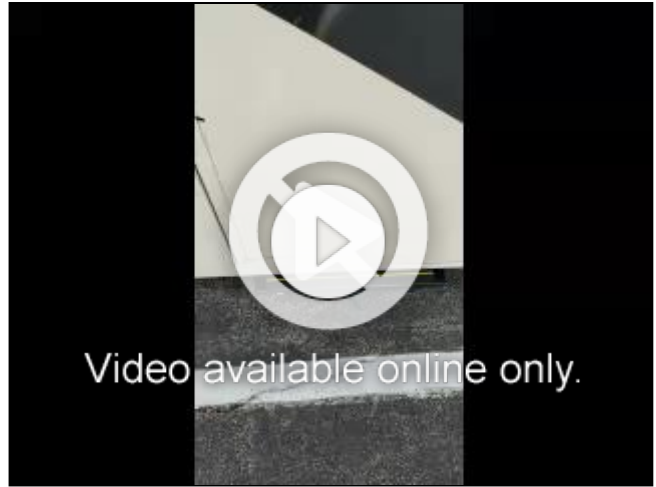
X
6.4 Item 3 (Video)
Video Screen Door Not Remaining Attached

6.5	Main Door Steps Acceptable
------------	--------------------------------------

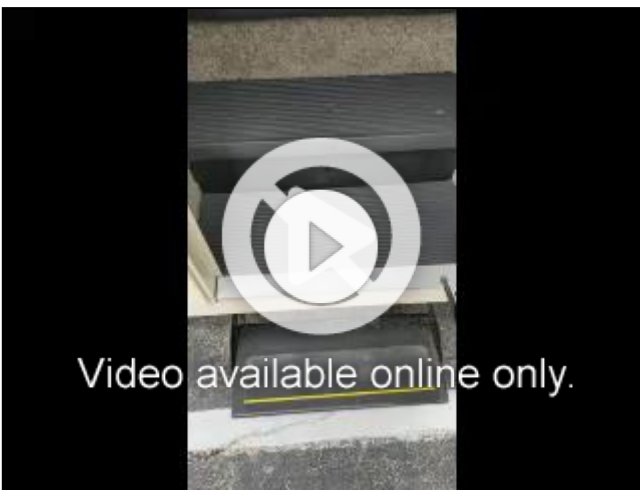
There is one electric step present



6.5 Item 1 (Picture)
entry step



X
6.5 Item 2 (Video)
Step Opening Video



X
6.5 Item 3 (Video)
Step Closing Video

6.6	Keys Acceptable
------------	---------------------------

The keys were made available during the inspection and operated all locks acceptably.

6.7	Handle Locks Acceptable
------------	-----------------------------------

Overview of the handle lock and key.



6.7 Item 1 (Picture)
door deadbolt lock open



6.7 Item 2 (Picture)
door did both lock closed



6.7 Item 3 (Picture)
door handle lock locked



6.7 Item 4 (Picture)
door handle lock unlocked

6.8 Deadbolt Locks

Acceptable

Overview of the deadbolt lock and key.

6.9 Other Items

Not Present

It is recommended that a qualified RV technician or appropriate service person investigate Life Safety Issues further and correct as needed prior to use.

It is recommended that a qualified RV technician or appropriate service person investigate all issues further and correct as needed.

[Expert RV Inspections & Service LLC](#) does not recommend any technicians or repair facilities.

All costs associated with further inspection fees and repair or replacement of item, component or unit should be considered before you purchase.

7(A) . Main Awning Front



Description

NOTE: The inspector has verified the items in this section.

Styles & Materials: Main Awning Front

Awning Brand:

Carefree of Colorado

Awning Length:

16'

Awning Type:

Electric

Awning Fabric:

Vinyl

Items: Main Awning Front

7.0.A

Awning

Acceptable



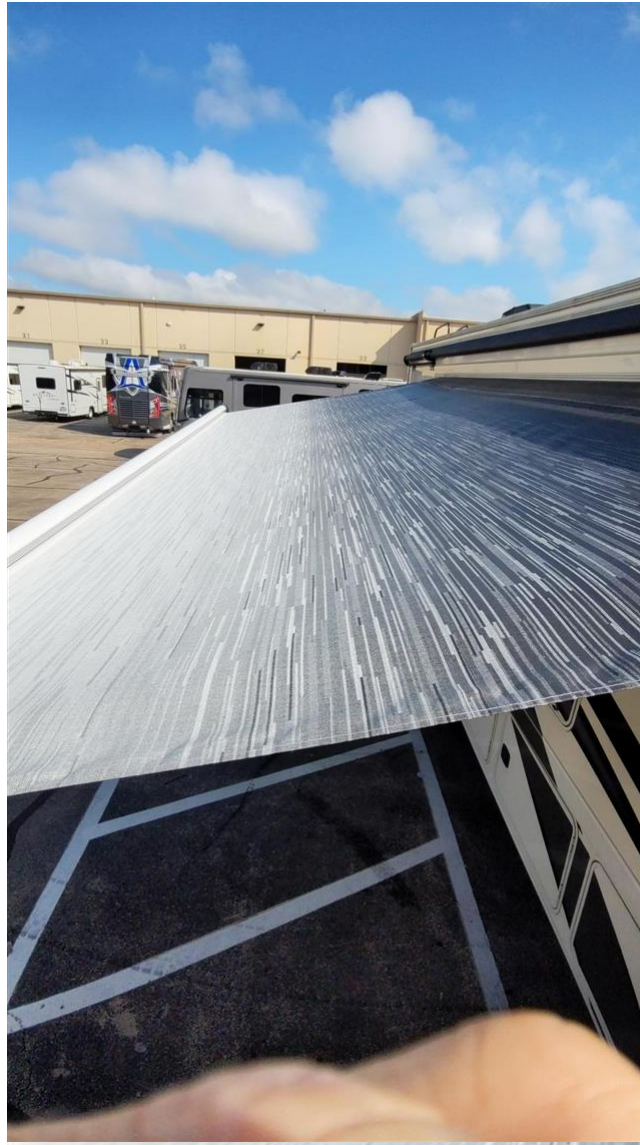
**MINOR
ISSUE**

The awning length is determined from manufacturer and/or dealer specifications and literature available for review by the inspector.

The fabric at the beginning of the awning roll is visibly discolored from prolonged contact with the awning roll mechanism.



7.0.A Item 1 (Picture)
Main Awning



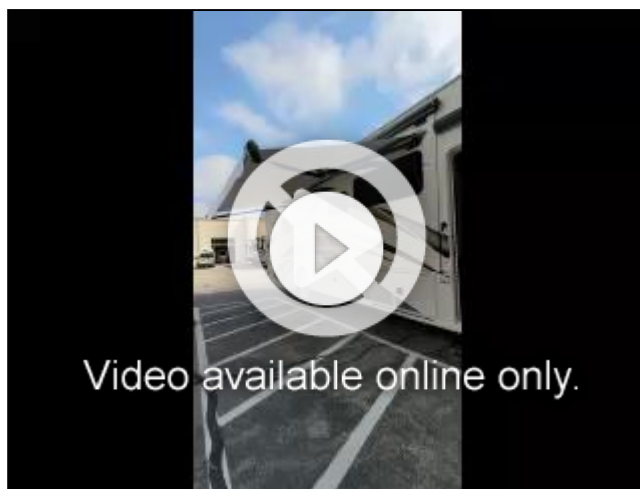
7.0.A Item 2 (Picture)
awning fabric on top



7.0.A Item 3 (Picture)
faded awning fabric at upper edge



7.0.A Item 4 (Picture)
Awning fabric condition underneath

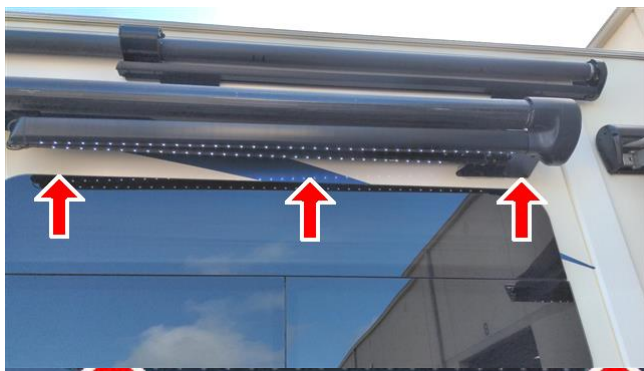


X
7.0.A Item 5 (Video)
Video Awning Retraction

7.1.A Awning Lights

Acceptable

The awning lights illuminated properly.

7.1.A Item 1 (Picture)
right side awning lights7.1.A Item 2 (Picture)
left side awning lights

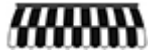
It is recommended that a qualified RV technician or appropriate service person investigate Life Safety Issues further and correct as needed prior to use.

It is recommended that a qualified RV technician or appropriate service person investigate all issues further and correct as needed.

[Expert RV Inspections & Service LLC](#) does not recommend any technicians or repair facilities.

All costs associated with further inspection fees and repair or replacement of item, component or unit should be considered before you purchase.

7(B) . Door Awning



Description

NOTE: The inspector has verified the items in this section.

Styles & Materials: Door Awning

Awning Brand:

Carefree of Colorado

Awning Length:

3'

Awning Type:

Electric

Awning Fabric:

Vinyl

Items: Door Awning

7.0.B	Awning Acceptable
--------------	-----------------------------

The awning length is determined from manufacturer and/or dealer specifications and literature available for review by the inspector.



7.0.B Item 1 (Picture)
door awning manufacturer label



7.0.B Item 2 (Picture)
door awning extended



7.0.B Item 3 (Picture)
top of awning fabric

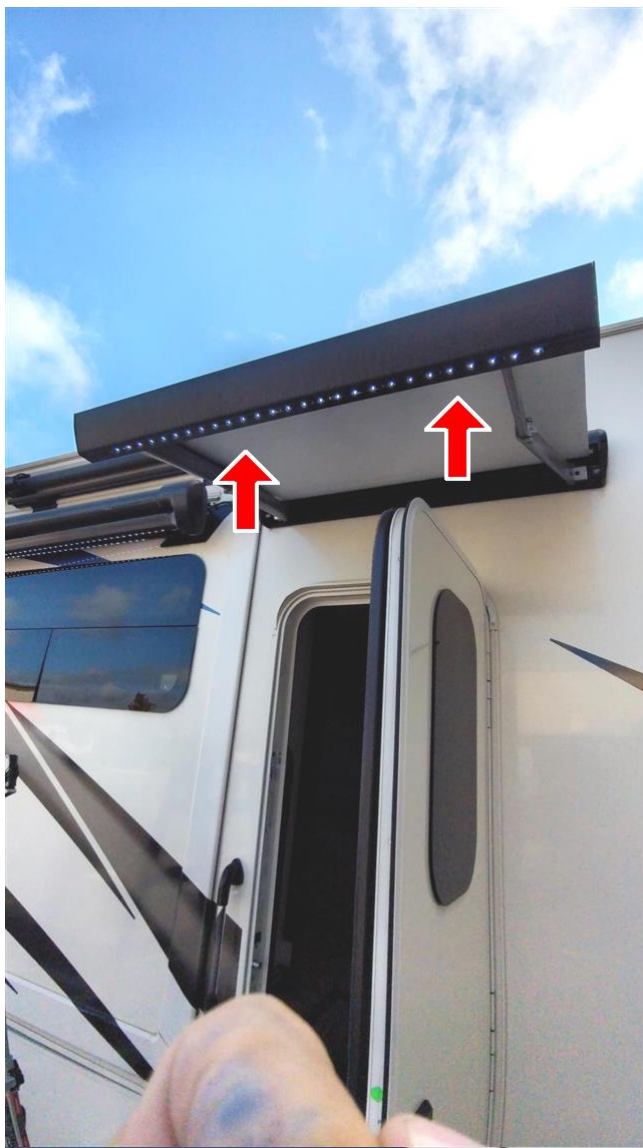


X
7.0.B Item 4 (Video)
Video Door Awning Retract

7.1.B Awning Lights

Acceptable

The awning lights are operational.



7.1.B Item 1 (Picture)
awning lights lit

It is recommended that a qualified RV technician or appropriate service person investigate Life Safety Issues further and correct as needed prior to use.

It is recommended that a qualified RV technician or appropriate service person investigate all issues further and correct as needed.

Expert RV Inspections & Service LLC does not recommend any technicians or repair facilities.

All costs associated with further inspection fees and repair or replacement of item, component or unit should be considered before you purchase.

8. Curbside Sidewall



Description

NOTE: The inspector has verified the items in this section.

Styles & Materials: Curbside Sidewall

Wall Surface Type:

Gel-Coat with Decals

Windows Type:

Glass With No Frame

Sidewall Camera Location:

Integral to Side Mirror

Number of Cargo Bays:

Five

Number : 5 bays 6 doors

Cargo Bay Door Latches:

Locking Slam Latch

Locking Twist Latch

Sliding Cargo Bay Storage Tray:

No

Appliances:

Other

Appliance : propane quick connect

Exterior Speakers Functioning:

Not Present

Items: Curbside Sidewall

8.0 Curbside Sidewall Overview

Acceptable

Overview of curbside sidewall



8.0 Item 1 (Picture)

curbside sidewall overview

8.1 Sidewall Condition

Acceptable

The overall appearance of the curbside sidewall is consistent with the age of the RV.

8.2 Paint & Decals

Acceptable

The curbside sidewall paint and decals condition is consistent with the age of the RV.

8.3 Sidewall Camera
Acceptable

Curbside sidewall camera



8.3 Item 1 (Picture)
curbside sidewall camera curbside sidewall camera

8.4 Windows
Acceptable

Overview of sidewall windows



8.4 Item 1 (Picture)
curbside wall windows



8.4 Item 2 (Picture)

8.5 Cargo Bays
Acceptable

The overall condition of the curbside cargo bay doors is consistent with the age of the RV. They all open and close acceptably. The switch to activate the cargo bay lighting is located inside the front entrance.



8.5 Item 1 (Picture)
curbside cargo bays overview



8.5 Item 2 (Picture)
front cargo bay



8.5 Item 3 (Picture)
front cargo bay suicide door mechanism



8.5 Item 4 (Picture)
front center cargo bay



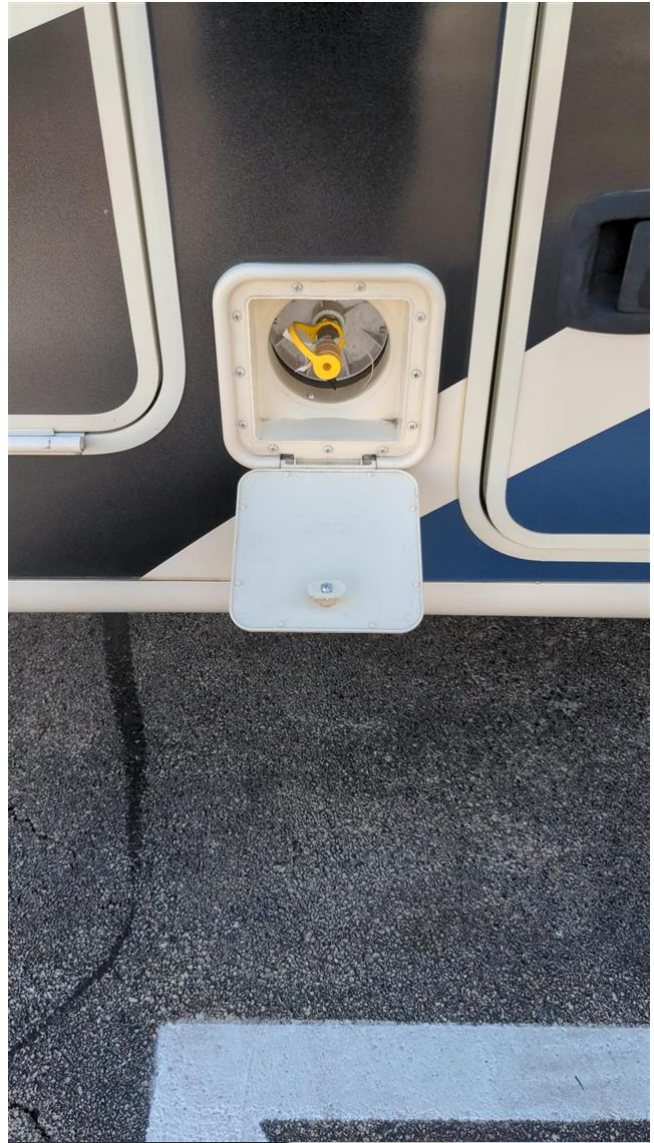
8.5 Item 5 (Picture)
rear center cargo Bay



8.5 Item 6 (Picture)
rear cargo Bay one



8.5 Item 7 (Picture)
rear most cargo bay



8.5 Item 8 (Picture)
propane quick connect access port



8.5 Item 9 (Picture)
representative cargo Bay lamp illuminated

8.6	Vents Not Present
8.7	Lights Not Present
8.8	Exterior Speakers Not Present

Overview of the curbside sidewall lights.

Overview of the curbside exterior speakers.

It is recommended that a qualified RV technician or appropriate service person investigate Life Safety Issues further and correct as needed prior to use.

It is recommended that a qualified RV technician or appropriate service person investigate all issues further and correct as needed.

[Expert RV Inspections & Service LLC](#) does not recommend any technicians or repair facilities.

All costs associated with further inspection fees and repair or replacement of item, component or unit should be considered before you purchase.

9. Curbside Slideout(s)



Description

NOTE: The inspector has verified the items in this section.

Styles & Materials: Curbside Slideout(s).

Slideout Roof Type:

(TPO) Rubber (solid color, newer)

Slideout Drive Mechanism:

Schwintek

Slideout Windows:

Glass Without Frame

Slideout Topper Awning:

Yes

Items: Curbside Slideout(s).

9.0	Overview of Curbside Slideout Acceptable
------------	--

Overview of the slideout.



9.0 Item 1 (Picture)
overview of curbside slide out



X
9.0 Item 2 (Video)
Video Curbside Awning Extend

9.1	Slideout Alignment Acceptable
------------	---

Overall the slideout alignment is acceptable.

9.2 Slideout Roof
Acceptable

Overview of slide out roof



9.2 Item 1 (Picture)
slide out roof

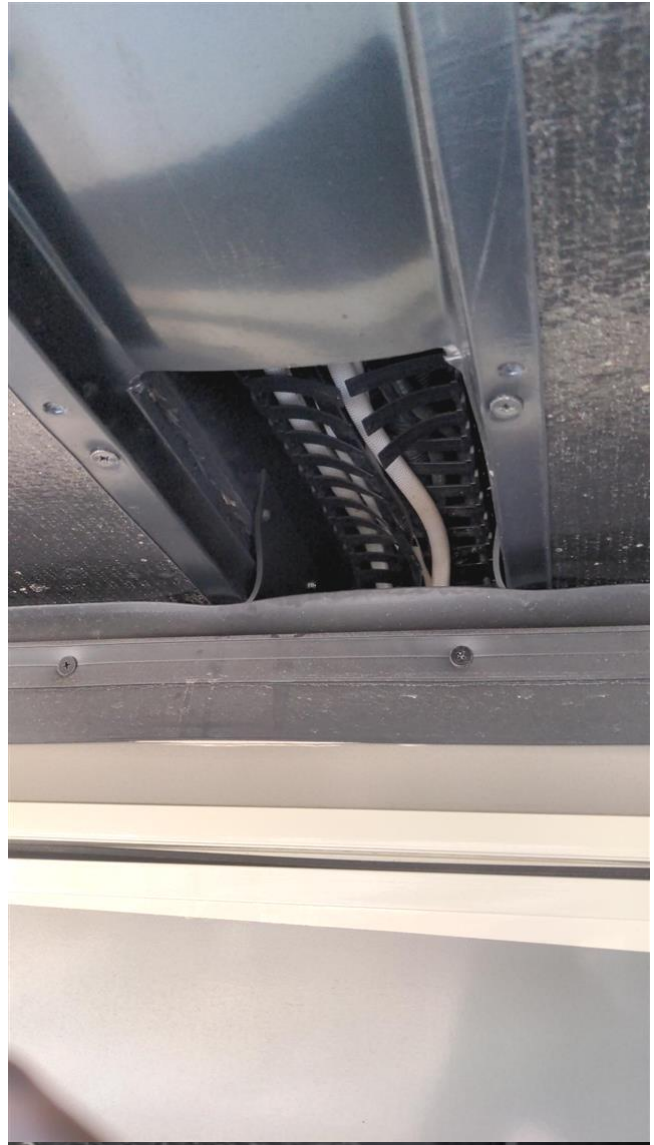
9.3 Slideout Sidewall
Acceptable

9.4	Slideout Floor Acceptable
------------	-------------------------------------

Overview of slide out floor



9.4 Item 1 (Picture)
slide up floor detail 1



9.4 Item 2 (Picture)
slide out wiring harness



9.4 Item 3 (Picture)
slide out detail 2



9.4 Item 4 (Picture)
slide out floor

9.5

Slideout Windows

Acceptable

9.6

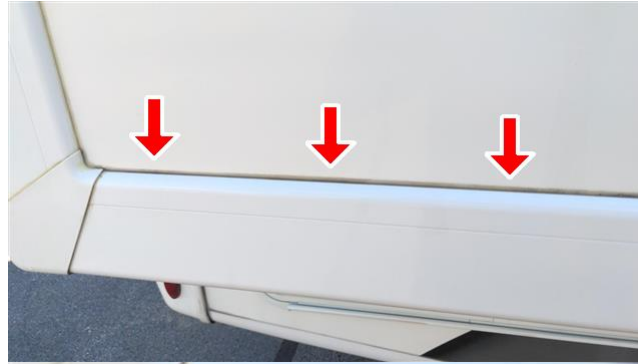
Slideout T-Molding Trim

Fair



(1) Overview of Slideout T-Molding Trim

The sealant on the t-molding on the curbside slide out is brittle and dried out. There are no obvious defects at this time, but the inspector recommends that the sealant be addressed by a qualified RV technician.



9.6 Item 1 (Picture)
T-molding sealant



(2) The lower front T-molding corner is loose and the adhesive is failing. This is a potential source of water intrusion, or it could be lost during travel.. The inspector recommends that the trim be repaired by a qualified RV technician.



9.6 Item 2 (Picture)

9.7

Sweeps, Seals, & Gaskets

Acceptable



It is recommended the seals be checked every time a slideout is extended or retracted.

The seal and sweep on the curbside roof slide out is partially indented. The seal should be checked after every use for proper position.



9.7 Item 1 (Picture)
Typical Slideout Sweep Seal



9.7 Item 2 (Picture)
Typical Slideout Bulb Seal



9.7 Item 3 (Picture)
curbside slide out sweep



9.7 Item 4 (Picture)
partially indented front curbside sweep seal



9.7 Item 5 (Picture)
curbside slide out roof seal and sweep

9.8

Slideout Gear Rack System

Acceptable

(1) Overview of the slideout gear rack system.



9.8 Item 1 (Picture)
slide out gear rack system



(2) This RV is equipped with a Schwintek slideout.

When extending or retracting a Schwintek slideout, hold the button for a full 3 seconds after fully moving the slideout in or out.

This helps the slideout adjust itself into proper alignment.

9.9

Slideout Wiring Harness

Acceptable

9.10

Slideout Switch

Acceptable

The slide out operational switch is on the touch panel outside the bathroom.

9.11 Awning Topper Frame & Latching Mechanism
Acceptable

I slide out topper awning is present.



9.11 Item 1 (Picture)
slide out topper

It is recommended that a qualified RV technician or appropriate service person investigate Life Safety Issues further and correct as needed prior to use.

It is recommended that a qualified RV technician or appropriate service person investigate all issues further and correct as needed.

[Expert RV Inspections & Service LLC](#) does not recommend any technicians or repair facilities.

All costs associated with further inspection fees and repair or replacement of item, component or unit should be considered before you purchase.

10. Rear Cap



Description

NOTE: The inspector has verified the items in this section.

Styles & Materials: Rear Cap

Wall Surface Type:

Gel-Coat with Decals

Roof Ladder - Type:

Mounted

Hitch Receiver - Brand:

LCI

Splash / Spray Stop Type:

None

Hitch - Weight Rating:

Class 3 (up to 8000 GTW)

Pin Connector Type:

7 Pin

Items: Rear Cap

10.0

Rear Cap Overview

Acceptable

The overall appearance of the rear cap sidewall is consistent with the age of the RV.



10.0 Item 1 (Picture)
rear cap overview

10.1 Sidewall Condition

Acceptable

The overall appearance of the rear cap sidewall is consistent with the age of the RV.

10.2 Paint & Decals

Acceptable

The overall appearance of the rear cap sidewall paint and decals is consistent with the age of the RV.

10.3 Windows

Acceptable

Rear cap window



10.3 Item 1 (Picture)
rear cap window

10.4 Cargo Bays

Not Present

The overall appearance of the rear cap cargo bay doors is consistent with the age of the RV. The doors open and close acceptably.

10.5 Lights

Acceptable

Overview of the rear cap lights.

10.6 Backup / Rear Camera

Acceptable

Overview of backup camera



10.6 Item 1 (Picture)
backup camera

10.7 Ladder
Acceptable

Overview of the ladder



10.7 Item 1 (Picture)
ladder

10.8 Hitch
Acceptable

Overview of the hitch receiver.



10.8 Item 1 (Picture)
rear hitch



10.8 Item 2 (Picture)
rear hitch capacity warning label

10.9 Bumper
Not Present

It is recommended that a qualified RV technician or appropriate service person investigate Life Safety Issues further and correct as needed prior to use.

It is recommended that a qualified RV technician or appropriate service person investigate all issues further and correct as needed.

[Expert RV Inspections & Service LLC](#) does not recommend any technicians or repair facilities.

All costs associated with further inspection fees and repair or replacement of item, component or unit should be considered before you purchase.

11. Streetside Sidewall



Description

NOTE: The inspector has verified the items in this section.

Styles & Materials: Streetside Sidewall

Wall Surface Type:

Gel-Coat with Decals

Windows Type:

Glass With No Frame

Number of Cargo Bays:

Seven

Sidewall Camera Location:

Integral to Side Mirror

Cargo Bay Door Latches:

Locking Slam Latch

Locking Twist Latch

Sliding Cargo Bay Storage Tray:

No

Vent Type:

Other

Type : Furnace

Appliances:

Water Heater

Furnace

Cable TV / Satellite Receptacle Location:

Exterior Wall Surface

Exterior Speakers Functioning:

Not Present

Items: Streetside Sidewall

11.0 Overview of Streetside Sidewall

Acceptable

Overview of Street side sidewall



11.0 Item 1 (Picture)

streetside sidewall overview

11.1 Sidewall Condition

Acceptable

The overall appearance of the streetside sidewall is consistent with the age of the RV.

11.2 Paint & Decals

Acceptable

The streetside sidewall paint and decals condition is consistent with the age of the RV.

11.3 Sidewall Camera

Acceptable

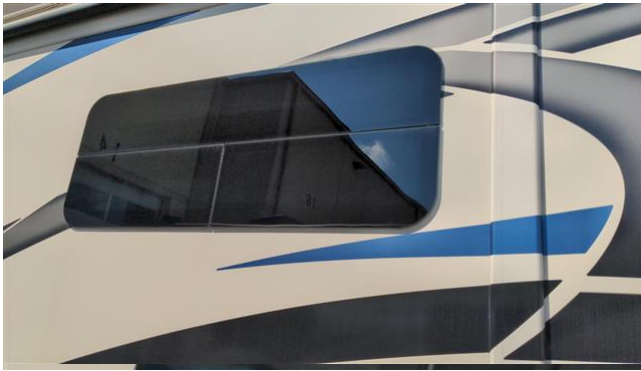
Streetside sidewall camera



11.3 Item 1 (Picture)
streetside sidewall camera

11.4 **Windows**
Acceptable

Overview of Streetside windows



11.4 Item 1 (Picture)
streetside center window



11.4 Item 2 (Picture)
streetside rear window

11.5 **Cargo Bays**
Acceptable

The overall condition of the streetside cargo bay doors is consistent with the age of the RV. They all open and close acceptably.



11.5 Item 1 (Picture)
streetside cargo Bays overview



11.5 Item 2 (Picture)
rear generator compartment



11.5 Item 3 (Picture)
rear cargo Bay



11.5 Item 4 (Picture)
water Bay



11.5 Item 5 (Picture)
electrical bay



11.5 Item 6 (Picture)
center cargo Bay



11.5 Item 7 (Picture)
propane compartmentpropane compartment

11.6	Exterior Cable TV / Satellite Receptacle Acceptable
-------------	---

The antenna cable connection is at the rear of the street side sidewalk



11.6 Item 1 (Picture)
cable connection

11.7	Vents Not Present
-------------	-----------------------------

11.8	Lights Acceptable
-------------	-----------------------------

Overview of the streetside sidewalk lights.

11.9	Exterior Speakers Not Present
-------------	---

Overview of the curbside exterior speakers.

It is recommended that a qualified RV technician or appropriate service person investigate Life Safety Issues further and correct as needed prior to use.

It is recommended that a qualified RV technician or appropriate service person investigate all issues further and correct as needed.

Expert RV Inspections & Service LLC does not recommend any technicians or repair facilities.

All costs associated with further inspection fees and repair or replacement of item, component or unit should be considered before you purchase.

12. Streetside Slideout(s)



Description

NOTE: The inspector has verified the items in this section.

Styles & Materials: Streetside Slideout(s)

Slideout Roof Type:

(TPO) Rubber (solid color, newer)

Slideout Drive Mechanism:

Schwintek

Slideout Windows:

Glass With Frame

Glass Without Frame

Slideout Topper Awning:

Yes

Items: Streetside Slideout(s)

12.0 Overview of Streetside Slideout

Acceptable

Overview of the slideout.



12.0 Item 1 (Picture)

12.1 Slideout Roof

Acceptable

Overview of slide out roof



12.1 Item 1 (Picture)
slide out roof overview

12.2	Slideout Sidewall Acceptable
-------------	--

The overall appearance of the streetside slideout sidewall is consistent with the age of the RV.

12.3

Slideout Floor

Acceptable



**MINOR
ISSUE**

Overview of slide out floor

There is a small defect in the center area of the slide out floor which could be a source of water intrusion. The inspector recommends that the area be addressed by a qualified RV technician and resealed.



12.3 Item 1 (Picture)
slide out floor overview



12.3 Item 2 (Picture)
slide out floor small defect



12.3 Item 3 (Picture)
slide up floor detail one



12.3 Item 4 (Picture)
Slidell floor detail too

12.4	Slideout Windows Acceptable
-------------	---------------------------------------

Side windows with frame on slide outside



12.4 Item 1 (Picture)
slide out side window



12.4 Item 2 (Picture)
slide out main window



12.4 Item 3 (Picture)
slide out front side window

12.5

Slideout T-Molding Trim

Acceptable

Overview of Slideout T-Molding Trim

12.6

Sweeps, Seals, & Gaskets

Acceptable



It is recommended the seals be checked every time a slideout is extended or retracted.



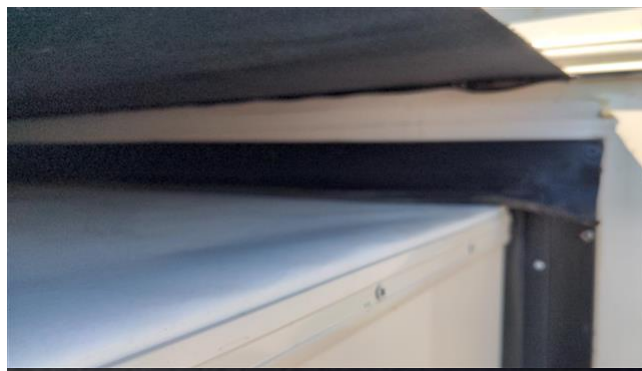
12.6 Item 1 (Picture)
Typical Slideout Sweep Seal



12.6 Item 2 (Picture)
Typical Slideout Bulb Seal



12.6 Item 3 (Picture)
slide out sweep



12.6 Item 4 (Picture)
slide out roof sweep

12.7

Slideout Gear Rack System

Acceptable

(1) Overview of the slideout gear rack system.



12.7 Item 1 (Picture)
slide out gear rack



(2) This RV is equipped with a Schwintek slideout.

When extending or retracting a Schwintek slideout, hold the button for a full 3 seconds after fully moving the slideout in or out.

This helps the slideout adjust itself into proper alignment.

12.8

Slideout Wiring Harness

Acceptable

12.9

Slideout Switch

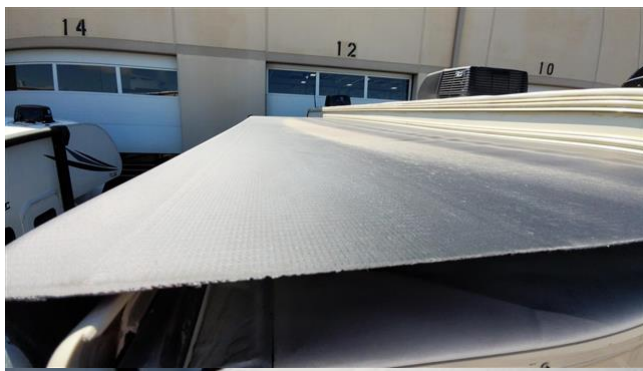
Acceptable

The slide out switch is located on the master panel outside the bathroom

12.10 Awning Topper Frame & Latching Mechanism

Acceptable

Overview of slide out roof topper



12.10 Item 1 (Picture)
slide out roof topper

It is recommended that a qualified RV technician or appropriate service person investigate Life Safety Issues further and correct as needed prior to use.

It is recommended that a qualified RV technician or appropriate service person investigate all issues further and correct as needed.

Expert RV Inspections & Service LLC does not recommend any technicians or repair facilities.

All costs associated with further inspection fees and repair or replacement of item, component or unit should be considered before you purchase.

13. Exterior Appliances



Description

NOTE: The inspector has verified the items in this section.

Styles & Materials: Exterior Appliances

Water Heater Location:

Streetside

Water Heater Brand:

Dometic

Water Heater Type:

Tank Type

Water Heater Heat Source(s):

Gas and Electric

Water Heater Type of Ignition:

DSI and Electric

Water Heater Dauber Screens Present:

No

Refrigerator Access Location:

NA (12 Volt, Residential)

Refrigerator Brand:

Other

Extra Info : Contoure

Refrigerator Condensation Drip Line Evident:

No

Furnace Location:

Streetside

Furnace Dauber Screens Present:

No

Furnace Brand:

Dometic

Furnace Exhaust Vent Clear of Debris:

Yes

Cooktop Exhaust Vent - Venting:

Re-Circulates Air

Items: Exterior Appliances

13.0 Water Heater
Acceptable

Overview of the exterior of the water heater.



13.0 Item 1 (Picture)
water heater cover closed



13.0 Item 2 (Picture)
water heater cover open

13.1 Water Heater Rubber Grommet Sealed Around Gas Line
Acceptable

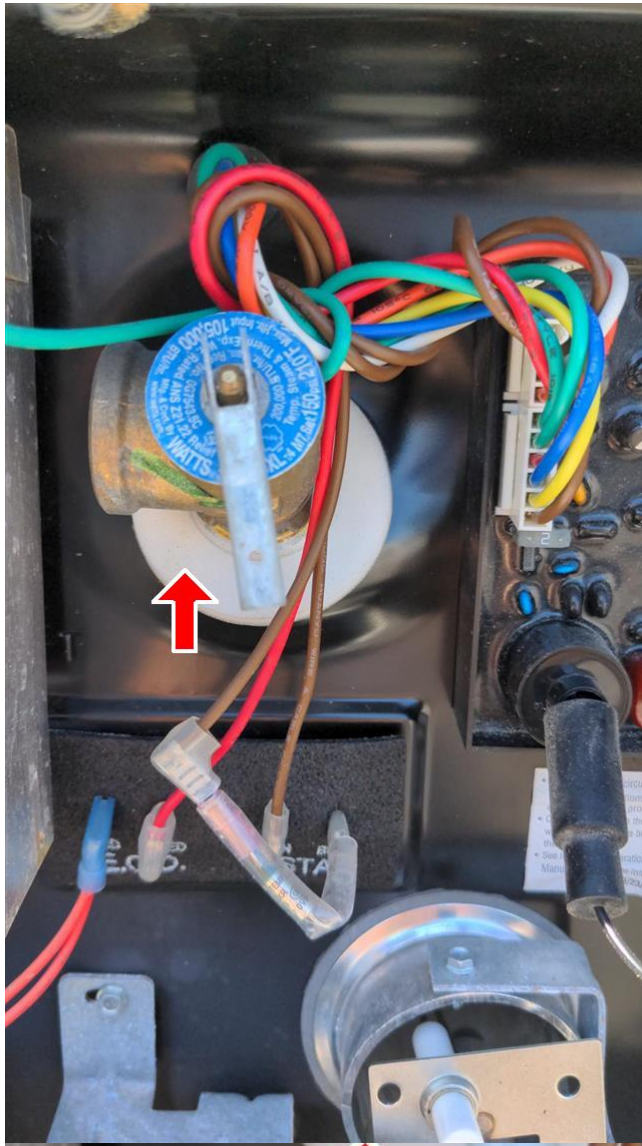
Water heater grommet sealed



13.1 Item 1 (Picture)
water heater grommet sealed

13.2 **Water Heater P&T Valve**
Acceptable

Water heater p & t valve



13.2 Item 1 (Picture)
water heater P&T valve

13.3 **Front / Main Furnace**
Acceptable

Overview of the exterior furnace vent.



13.3 Item 1 (Picture)
exterior furnace vent

It is recommended that a qualified RV technician or appropriate service person investigate Life Safety Issues further and correct as needed prior to use.

It is recommended that a qualified RV technician or appropriate service person investigate all issues further and correct as needed.

Expert RV Inspections & Service LLC does not recommend any technicians or repair facilities.

All costs associated with further inspection fees and repair or replacement of item, component or unit should be considered before you purchase.

14. Exterior Water Systems



Description

NOTE: The inspector has verified the items in this section.

Styles & Materials: Exterior Water Systems

City Water Fresh Water Connection Location:

Streetside

Gravity Fill Water Connection Location:

Streetside Sidewall

Sewer Hose Storage Location:

Cargo Bay

Items: Exterior Water Systems

14.0 Exterior Water Panel Acceptable

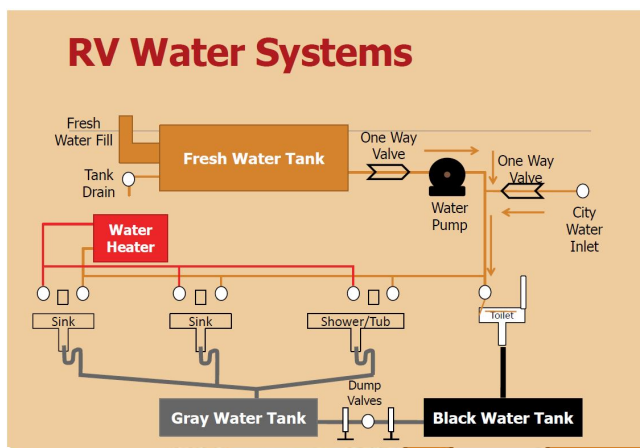
Overview of the exterior water panel.



14.0 Item 1 (Picture)
water bay overview

14.1 Overview of Exterior Water Systems Acceptable

Overview of exterior water systems.



14.1 Item 1 (Picture)
RV Water Systems

14.2

City Water Connection

Acceptable



City water connection.

While clearly labeled, the city water connection is black in color, while convention usually has it white in color. The inspector recommends the owner not confuse this inlet with the black tank flush inlet.



14.2 Item 1 (Picture)
city water connectioncity water connection



14.2 Item 2 (Picture)

14.3

City Water Pressure Regulator Available

Not Present



(1) A pressure regulator is recommended for all city water connections. If not installed, this can cause possible bursting of fresh water lines which may cause significant damage to the unit.

NOTICE

(2) The inspector provided a 40-50 PSI water regulator inline with the city water hose for the purposes of testing.

14.4

City Water Food Grade Hose Available for Test

Acceptable

(1) A food-grade hose was attached to the city water connection and was available for testing.

(2) It is recommended that a white or blue food-grade hose always be used when connecting to a city water supply.

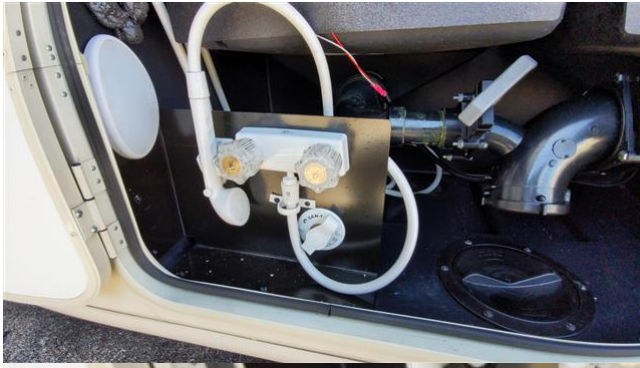


14.5

Outside Shower

Acceptable

Overview of the outside shower.



14.5 Item 1 (Picture)
outside shower

14.6

Black Tank Flush Connection

Acceptable



The black tank flush connection overview.

The black tank flush connection is white in color, when the convention is generally that the black tank flush is black. The inspector recommends that the owner be very familiar with operation of the flush and not have himself or others inadvertently connect a water hose thinking this is the city water inlet.



14.6 Item 1 (Picture)
black tank flush valve

14.7 Sewer Hose Fittings

Acceptable

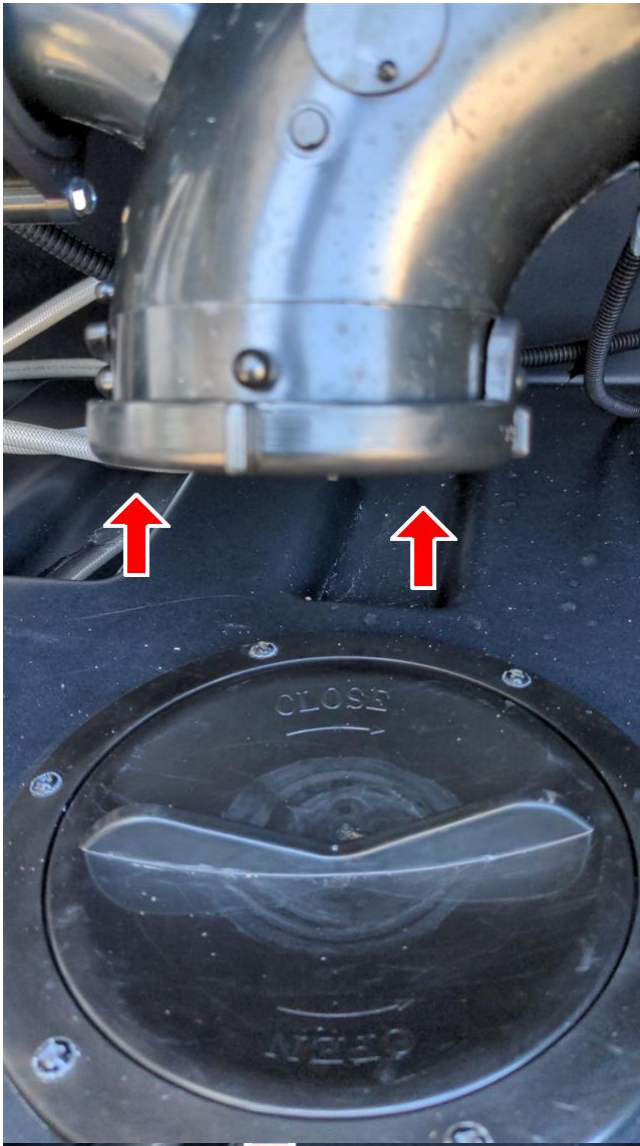
Black tank sewer fittings overview



14.7 Item 1 (Picture)
sewer hose fitting

14.8 Sewer Drain Cap(s)
Acceptable

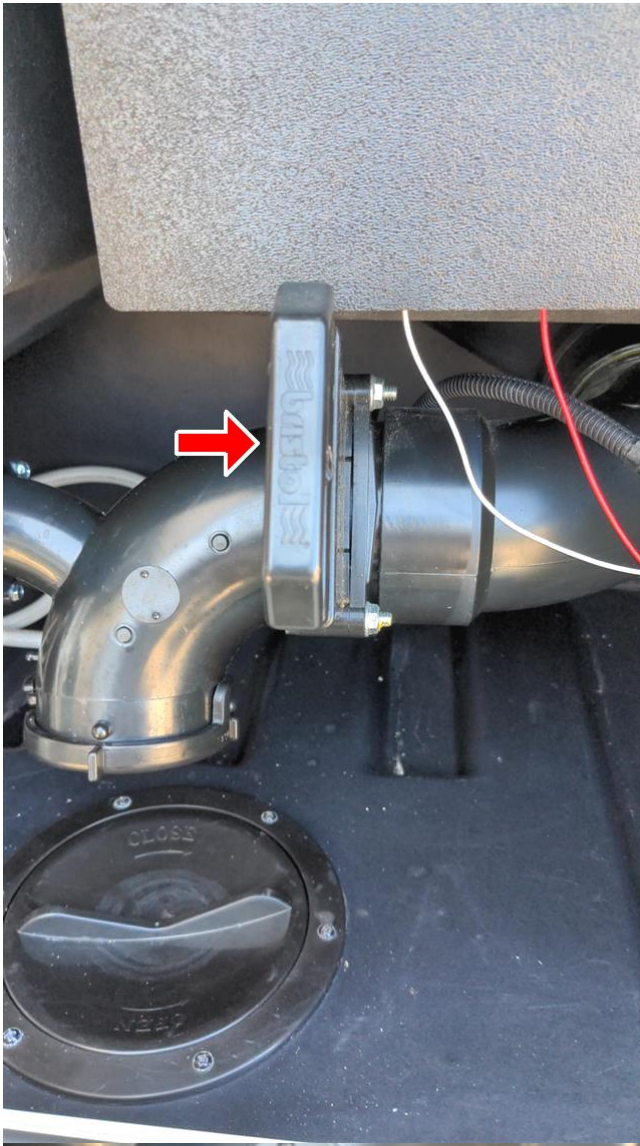
Overview of the sewer drain cap in place.



14.8 Item 1 (Picture)
sewer drain cap

14.9 Black Water Tank Valve(s)
Acceptable

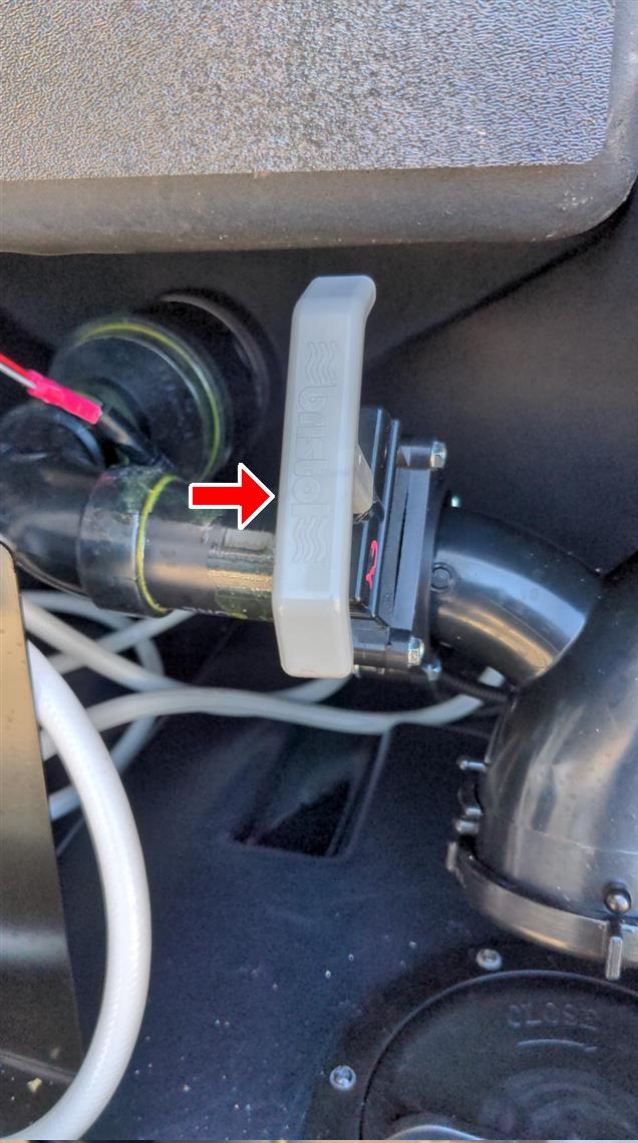
Overview of the black tank valves.



14.9 Item 1 (Picture)
black tank drain valve

14.10 **Gray Water Tank Valve(s)**
Acceptable

Overview of the grey tank valves.



14.10 Item 1 (Picture)
gray tank drain valve

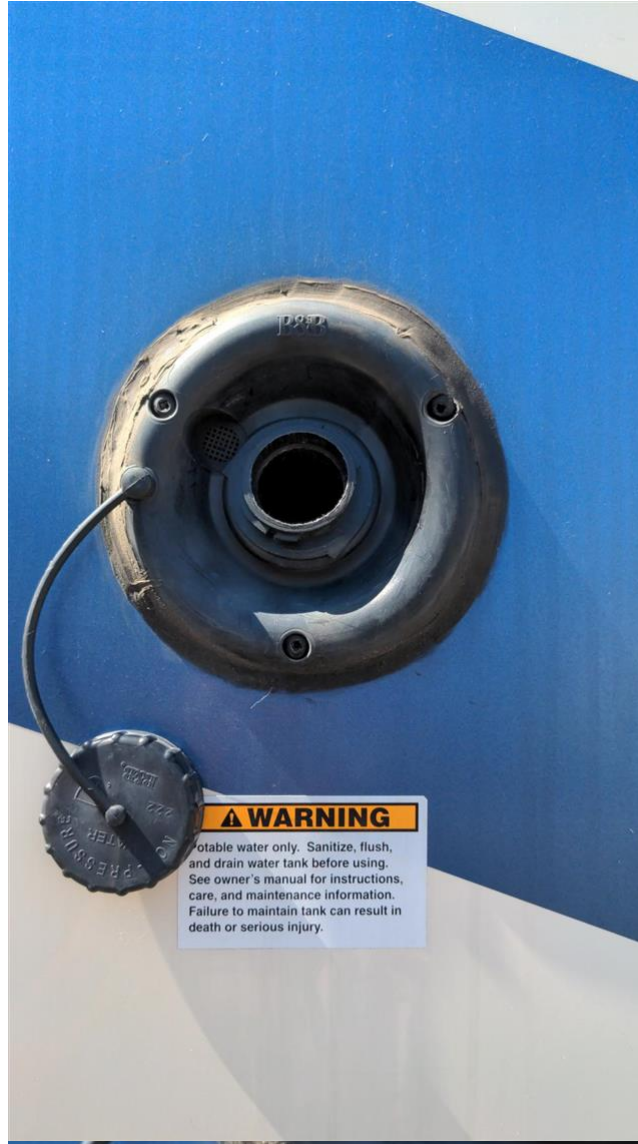
14.11

On-Board Water Tank / Fixtures for Tank Fill

Acceptable



Overview of the onboard tank fill. It is located street side on the rear of the coach sidewall. Again, convention has potable water inlets as white in color, not black.



14.11 Item 1 (Picture)
on board gravity water fill

14.12

Water Filter(s)

Not Present

It is recommended that a qualified RV technician or appropriate service person investigate Life Safety Issues further and correct as needed prior to use.

It is recommended that a qualified RV technician or appropriate service person investigate all issues further and correct as needed.

Expert RV Inspections & Service LLC does not recommend any technicians or repair facilities.

All costs associated with further inspection fees and repair or replacement of item, component or unit should be considered before you purchase.

15. Propane Tanks / Connections



Description

NOTE: The inspector has verified the items in this section.

Styles & Materials: Propane Tanks / Connections

ASME - Tank Size:

Gallons
Volume / Size : 20.8 gal

ASME - Tank Location:

Streetside Cargo Bay

ASME - Date of Manufacture:

2020

Quick Connect Port Location:

Streetside
Rear

Items: Propane Tanks / Connections

15.0

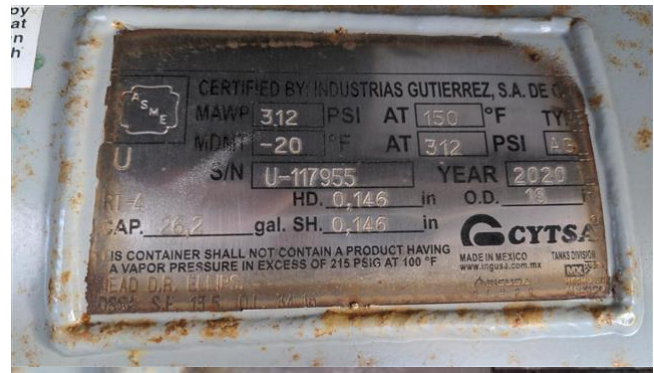
ASME Tank

Acceptable

Overview of the ASME LP tank.



15.0 Item 1 (Picture)
ASME tank overview



15.0 Item 2 (Picture)
ASME tank data plate

15.1

Hoses and Regulators

Not Inspected

NOTICE

Overview of the LP tank hose(s) and regulator(s). There was a cover over the regulator which was secured by fasteners. Prior to first use the inspector recommends that the system be evaluated by a qualified RV technician for appropriateness of use.



15.1 Item 1 (Picture)
regulator inside cover

15.2 LP Shutoff Valve
Acceptable

The LP shut off valve operates properly to shut off the flow of propane.



15.2 Item 1 (Picture)
propane shut off valve

15.3 Quick Connect Grill Port
Acceptable

Overview of the Quick Connect Grill Port.



15.3 Item 1 (Picture)
quick connect grill Port

It is recommended that a qualified RV technician or appropriate service person investigate Life Safety Issues further and correct as needed prior to use.

It is recommended that a qualified RV technician or appropriate service person investigate all issues further and correct as needed.

Expert RV Inspections & Service LLC does not recommend any technicians or repair facilities.

All costs associated with further inspection fees and repair or replacement of item, component or unit should be considered before you purchase.

16. Electrical



Description

NOTE: The inspector has verified the items in this section.

Styles & Materials: Electrical

Power Source - Type:

50 Amp / 240 Volts AC

Power Cord Reel:

Not Present

Inverter - Brand:

Xantrex

Shore Power Outlet Location:

Streetside

12 Volt DC Coach (House) Battery - Location:

Storage Bay

Coach Battery Type:

Deep Cycle / Marine

Battery 12 VDC Disconnect Location:

Interior Steps

12 Volt DC Chassis (Engine) Battery - Location:

Engine Compartment

Automatic Battery Watering System Present:

No

Generator - Brand:

Onan

Generator Oil Level:

1/2

Generator Fuel/Prime Switch Operation:

Acceptable

Generator - Hours of Operation:

Unknown

Generator - Tested Under Load:

By Running One AC Unit

Exterior 120 VAC Outlet(s) Location:

Exterior Wall Surface

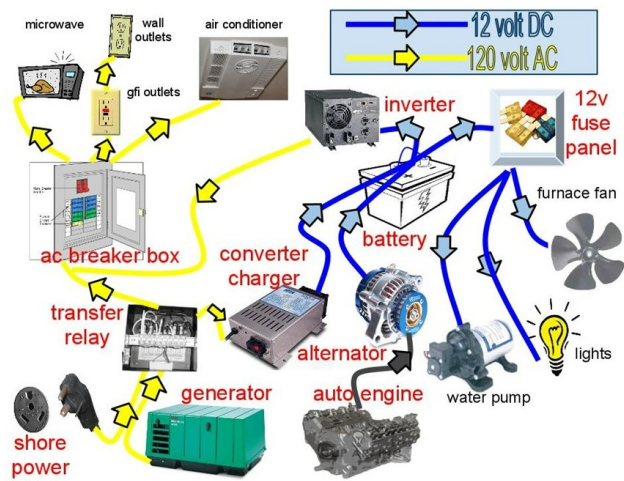
Cable / Satellite TC Hookup Location:

Cargo Bay Streetside

Items: Electrical

16.0 Overview of Electrical System
Acceptable

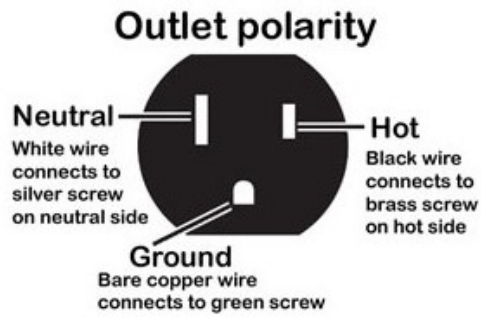
Overview of the RV Electrical System.



16.0 Item 1 (Picture)
RV Electrical Systems Diagram

16.1	Receptacles/Polarity Acceptable
-------------	---

Overview of the receptacle(s) polarity.



16.1 Item 1 (Picture)
120 Volt Correct Outlet Polarity



16.1 Item 2 (Picture)
bathroom outlet



16.1 Item 3 (Picture)
bedroom polarity

16.2	GFCI Receptacle Acceptable
-------------	--------------------------------------

The GFCI receptacle(s) operate as anticipated.



16.2 Item 1 (Picture)
Typical GFCI Outlet



16.2 Item 2 (Picture)
GFCI outlet tripped



16.2 Item 3 (Picture)
GFCI outlet reset

16.3

Electrical Panel Box

Acceptable



Overview of the electrical panel. The inspector recommends that the owner familiarize themselves with the electrical panel in that it is very close to the ground and can be difficult to access unless one is lying flat on the ground.



16.3 Item 1 (Picture)
electrical panel boxelectrical panel box



16.3 Item 2 (Picture)
electrical panel box wiring

16.4 **Circuit Breakers**
Acceptable

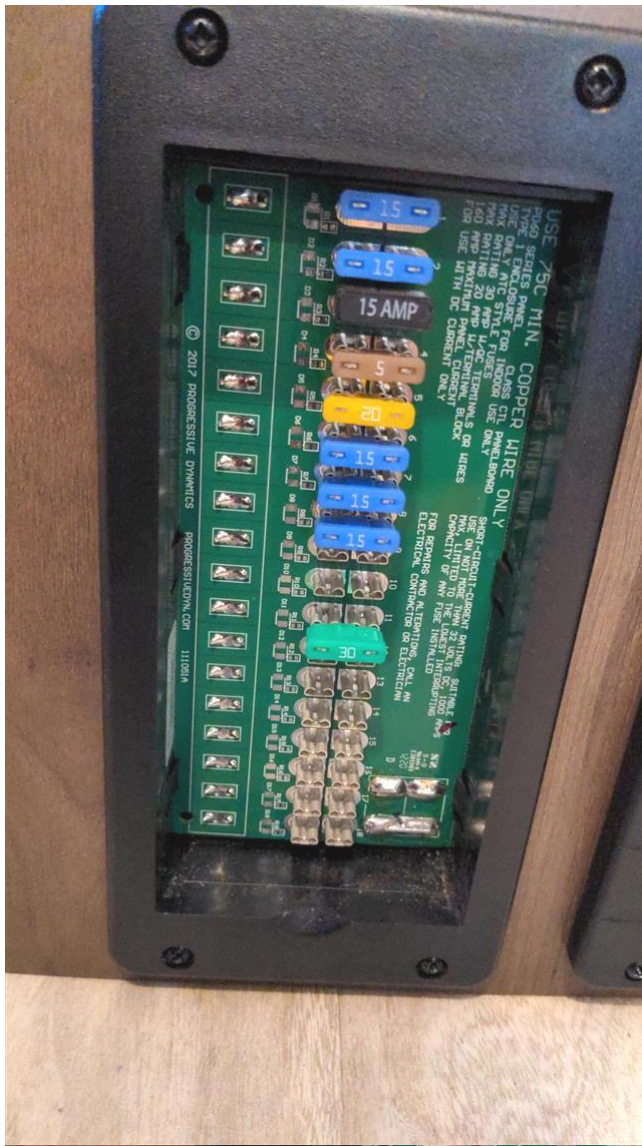
Overview of the circuit breakers in the electrical panel.



16.4 Item 1 (Picture)

16.5 Fuse Panel
Acceptable

Overview of the fuse panel.



16.5 Item 1 (Picture)
fuse panel, cover removed

16.6

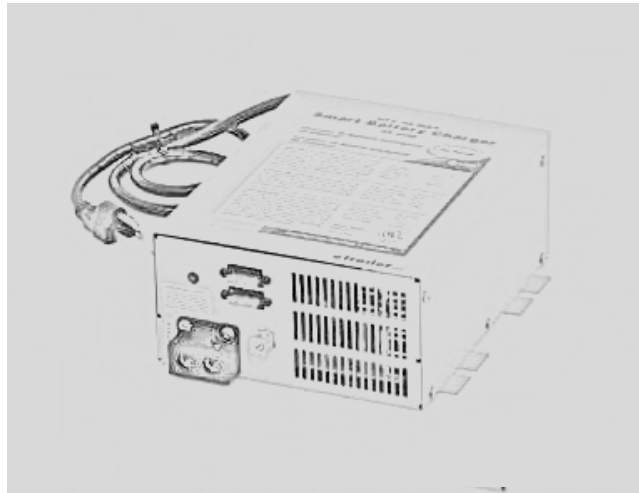
Converter

Acceptable

NOTICE

The inspector is unable to visually inspect the converter in most RV units.

Testing with a voltmeter while 120v AC power is ON and OFF will show if the converter is charging the 12 volt batteries by having a 0.5 volt difference.



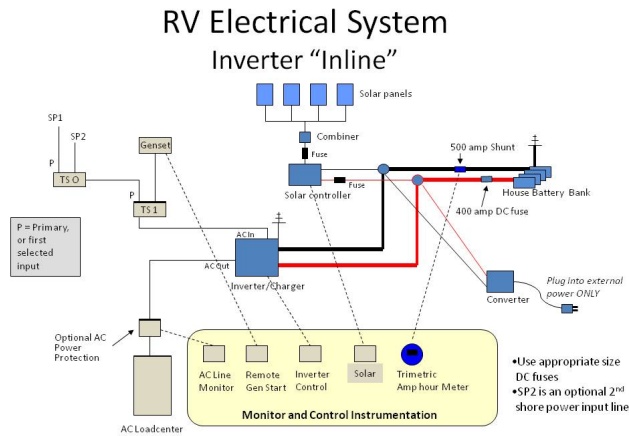
16.6 Item 1 (Picture)
Typical RV Converter



16.6 Item 2 (Picture)
battery voltage external power off

16.7 **Inverter**
Not Inspected

No inverter was identified by the inspector.



16.7 Item 1 (Picture)
Typical RV Inverter Wiring Schematic

16.8 **Exterior Shore Power Outlet**
Acceptable

16.9 **Power Cord**
Acceptable

Overview of the power cord.

16.10 **Power Cord Reel**
Not Present

16.11	Coach (House) Batteries Acceptable
--------------	--

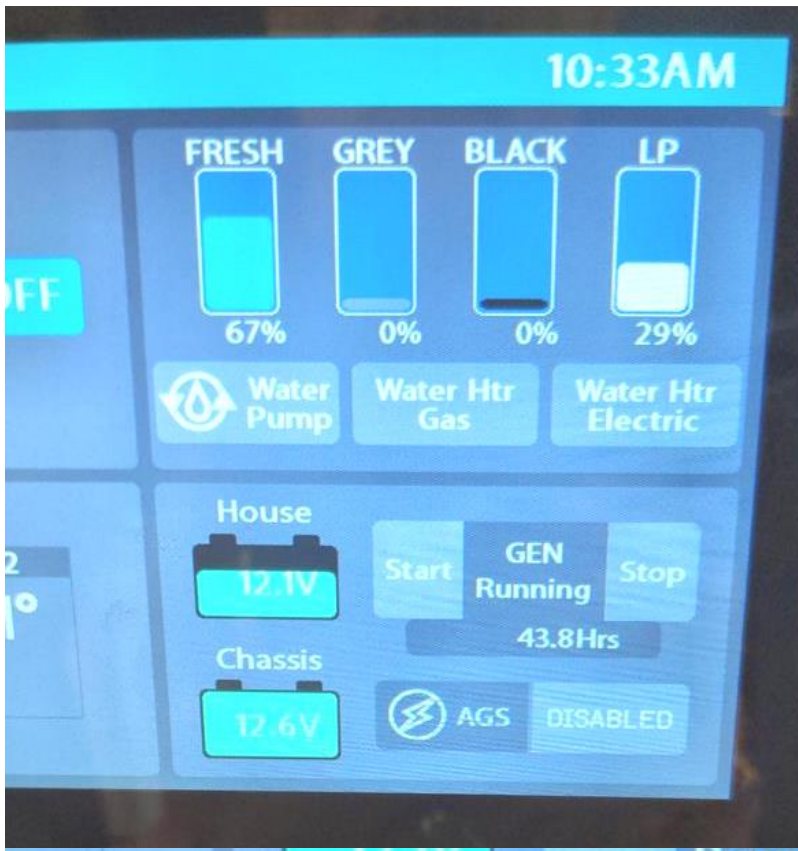
Overview of the coach batteries.



16.11 Item 1 (Picture)
Coach batteries



16.11 Item 2 (Picture)
Coach battery voltage while on generator



16.11 Item 3 (Picture)
battery voltage confirmed at panel

16.12 Battery Disconnect Switch

Acceptable

The battery disconnect switch is located inside the entryway



16.12 Item 1 (Picture)
battery disconnect switch

16.13 Chassis (Engine) Batteries

Acceptable

Overview of the chassis battery(s).

16.14 Exterior 120 VAC Outlets
Acceptable

There are two external 120 volt outlets, GFCI controlled, on the curbside slide out sidewall rear.



16.14 Item 1 (Picture)
external 120 volt outlets

16.15 Interior 120 VAC Outlets

Acceptable

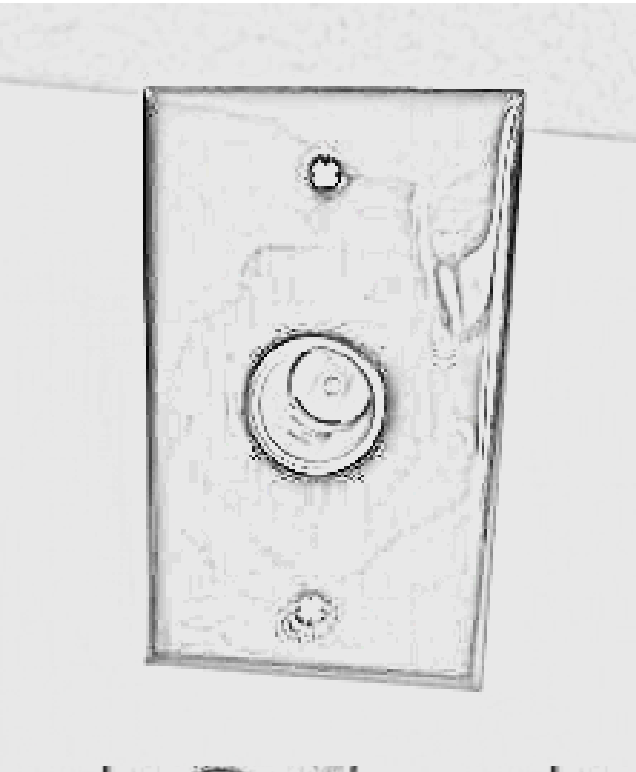
Bedroom Outlet



16.15 Item 1 (Picture)
Bedroom 120 VAC Outlet

16.16 **12 Volt Outlets**
Acceptable

Overview of the 12 volt outlet(s).



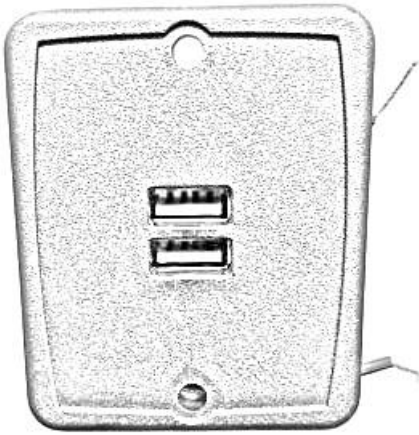
16.16 Item 1 (Picture)
Typical 12 Volt Outlet



16.16 Item 2 (Picture)
12 volt receptacle voltage

16.17 **USB Outlets**
Acceptable

Overview of the USB outlet(s).



16.17 Item 1 (Picture)
Typical RV USB Outlet



16.17 Item 2 (Picture)
USB outlet voltage

16.18

Generator

Fair



CORRECT PRIOR TO USE!

Overview of the generator. The generator electrical outlet has its rubber caps deteriorated and in lying in pieces at the bottom of the generator housing. The inspector recommends that these electrical connections be evaluated by a qualified RV technician prior to use. This is a life safety issue due to the risk of potential electrical shocks.



16.18 Item 1 (Picture)
damaged electrical power covers



16.18 Item 2 (Picture)
overview of generator



16.18 Item 3 (Picture)
generator data plate



X
16.18 Item 4 (Video)
Video of generator in operation



16.18 Item 5 (Picture)
Generator Hours = 43.8

16.19

Transfer Switch

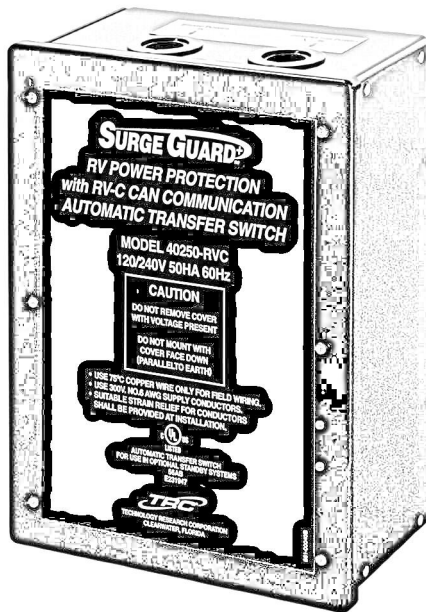
Acceptable



The inspector is unable to visually inspect the transfer switch as it is not accessible for inspection.

In case of a transfer switch failure and to protect the electronics in the RV, it is recommended the shore power be unplugged before starting the generator.

For the same reason, it is recommended the generator be turned off prior to plugging the power cord into shore power.



16.19 Item 1 (Picture)
Typical RV Transfer Switch

16.20 Solar Controller

Acceptable

Overview of the solar control panel. A solar controller is present at the entryway area, but no solar panels are installed on the roof.



16.20 Item 1 (Picture)
solar charge controller

It is recommended that a qualified RV technician or appropriate service person investigate Life Safety Issues further and correct as needed prior to use.

It is recommended that a qualified RV technician or appropriate service person investigate all issues further and correct as needed.

Expert RV Inspections & Service LLC does not recommend any technicians or repair facilities.

All costs associated with further inspection fees and repair or replacement of item, component or unit should be considered before you purchase.

17. Roof Exterior



Description

NOTE: The inspector has verified the items in this section.

NOTE: Lap sealant should appear soft, pliable and rubbery. If the lap sealant around roof edges, skylights, vents and appliances looks cracked, brittle, loose or turned up at the edges, it is very possible that this could cause water intrusion which can become a major issue.

NOTE: It is recommended that the roof and seams be checked every 6 months and repaired whenever necessary to prevent water intrusion.

Styles & Materials: Roof Exterior

Roof Type:

Rubber (TPO) (solid color, newer)

Number of Solar Panels:

None

Ladder Mount Type:

Fixed

Roof Item(s) Removed:

No

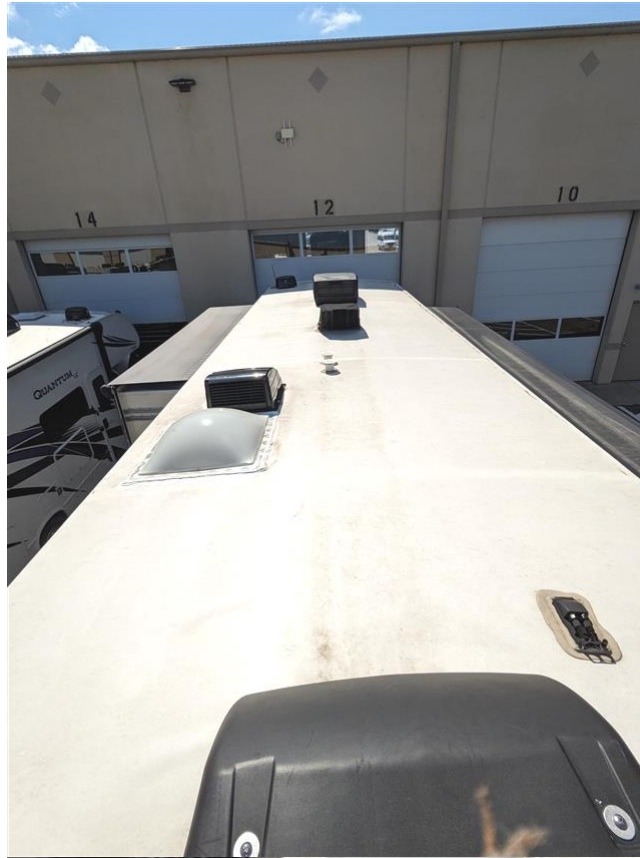
Items: Roof Exterior

17.0

Overview of the Roof

Acceptable

(1) Overview of the roof.



17.0 Item 1 (Picture)
roof - Back to Front



17.0 Item 2 (Picture)
Roof - Front to Back



MINOR ISSUE

(2) There are multiple areas of isolated bubbles in the roof membrane. The inspector found no areas of softness or crunching to suggest water damage. While many manufacturers claim such findings to be normal, the inspector recommends that the roof be inspected by a qualified RV technician for defects.



17.0 Item 3 (Picture)
Bubble in roof membrane

17.1

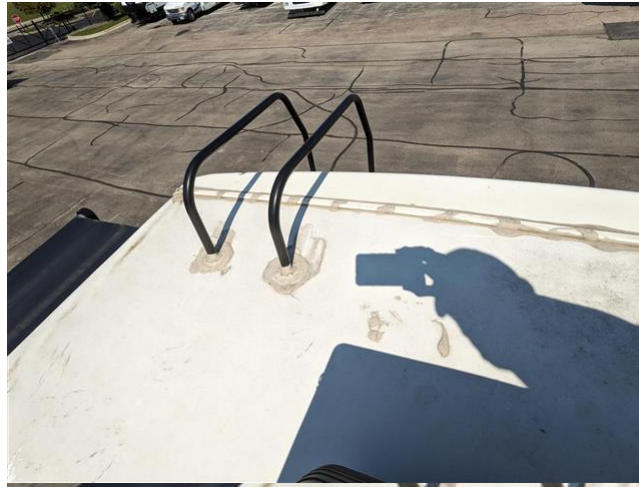
Lap Sealant

Fair



**MINOR
ISSUE**

Overview of the lap sealant. In general the lap sealant is dry but not brittle. While no obvious areas that could lead to water intrusion were found, the inspector recommends that the roof be inspected and addressed by a qualified RV roof technician.



17.1 Item 1 (Picture)
lap sealant example



17.1 Item 2 (Picture)



17.1 Item 3 (Picture)
Lap Sealant

17.2

Front Cap, Joints and Seals

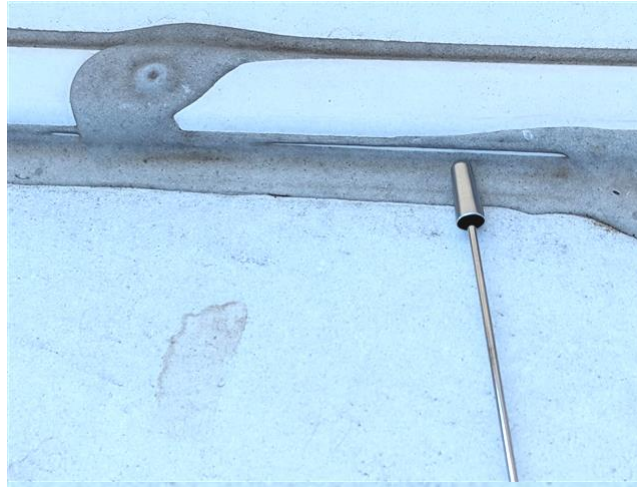
Fair



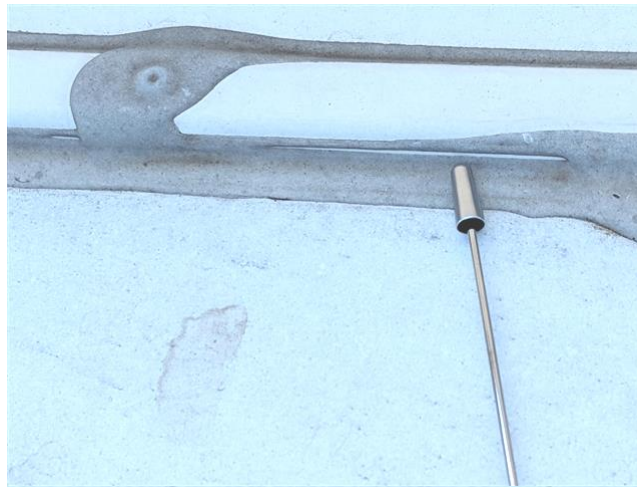
**MINOR
ISSUE**

Overview of the front cap seal.

There is an area in the sealant that shows that the front cap has separated and the sealant is split. This could be a source of water intrusion. The inspector recommends that the area be addressed by a qualified RV roof technician.



17.2 Item 1 (Picture)
Front cap sealant



17.2 Item 2 (Picture)
Front cap sealant

17.3

Trim Rail (Curbside)

Acceptable

Overview of the curbside trim rail.

17.4

Rear Cap, Joints and Seals

Acceptable

Overview of the rear cap seal.

17.5

Trim Rail (Streetside)

Acceptable

Overview or the streetside trim rail.

17.6 Exterior Vent Cover(s)

Acceptable

Overview of the exterior vent cover(s).



17.6 Item 1 (Picture)
Maxxair Vent Cover



17.6 Item 2 (Picture)
Vent Cover

17.7 Plumbing Vent(s)

Acceptable

Overview of the plumbing vent(s).



17.7 Item 1 (Picture)
Plumbing vents

17.8 Refrigerator Vent

Not Present

Overview of the refrigerator vent.



17.8 Item 1 (Picture)

Typical Roof Mounted Refrigerator Vent

17.9	Skylight(s) Acceptable
-------------	----------------------------------

Overview of the skylight(s). The skylight has been resealed recently.



17.9 Item 1 (Picture)
Resealed lap sealant



17.9 Item 2 (Picture)

17.10 **Air Conditioner(s)**
Acceptable

Overview of the AC unit(s).



17.10 Item 1 (Picture)
Rear AC



17.10 Item 2 (Picture)
AC interior



17.10 Item 3 (Picture)
Front AC

17.11	Air Conditioner Shroud Acceptable
--------------	---

Overview of AC Shroud



17.11 Item 1 (Picture)
AC Shroud

17.12	Air Conditioner Exterior Coils Not Present
--------------	--

17.13	Antennas / Receivers Acceptable
--------------	---

Antennae



17.13 Item 1 (Picture)
Winegard



17.13 Item 2 (Picture)
Winegard and access



17.13 Item 3 (Picture)
Radio / GPS

17.14 Solar Panel(s)

Not Present

No solar panels were installed in this coach.



17.14 Item 1 (Picture)
Typical Single Roof Mounted Solar Panel

17.15

Solar Panel Entry Plate

Acceptable

Overview of Solar Connector



17.15 Item 1 (Picture)
Solar Controller



17.15 Item 2 (Picture)
Solar Entry Plate

17.16

Ladder Mounts

Acceptable

(1) Overview of the ladder mounts.



17.16 Item 1 (Picture)
Ladder Mount



(2) A loose screw has been sealed into the sealant at the ladder base mount. The inspector recommends that the area be addressed by a qualified roof technician and the screw be removed and sealant be reapplied.



17.16 Item 2 (Picture)
Screw in sealant



17.16 Item 3 (Picture)
Screw in Sealant

It is recommended that a qualified RV technician or appropriate service person investigate Life Safety Issues further and correct as needed prior to use.

It is recommended that a qualified RV technician or appropriate service person investigate all issues further and correct as needed.

Expert RV Inspections & Service LLC does not recommend any technicians or repair facilities.

All costs associated with further inspection fees and repair or replacement of item, component or unit should be considered before you purchase.

18. Appliances



Description

NOTE: The inspector has verified the items in this section.

NOTE: If the RV has an absorption refrigerator, the absorption refrigerator must be in operation for at least 12 hours to allow for an accurate temperature reading to be taken in the freezer and the refrigerator compartments.

NOTE: This inspection may not reveal a problem if the refrigerator was not powered on for the minimum recommended time.

Styles & Materials: Appliances

Furnace External Exhaust Heat Detected:

Yes

Microwave - Brand:

Contoure

Microwave - Type:

Microwave Only

Microwave Water Boil Test:

8 oz Water Boiled

Cooktop Exhaust Vent - Part of Microwave:

Yes

Cooktop - Brand:

Furrion

Cooktop - Burner Ignition Source:

Auto - Piezo Ignition

Oven - Brand:

Furrion

Oven - Burner Ignition Source:

Auto - Piezo Inition - 2 Knobs

Refrigerator Location:

Curbside Slideout

Refrigerator / Freezer Doors:

Two

Brand Refrigerator:

Other

Model / Serial : Contoure

Type Refrigerator:

12v DC Compressor

Control Panel Location - Refrigerator:

Inside Refrigerator

Power Source - Refrigerator:

12 Volts DC

Powered ON 12 + Hours - Refrigerator:

No

Refrigerator Temperature Recorded:

Degrees F

Temperature : 33

Freezer Temperature Recorded:

Degrees F

Temperature : 0 degrees

Items: Appliances

18.0	Furnace(s) Acceptable
-------------	---------------------------------

Temperature of the heated air flowing from the furnace vent(s).



18.0 Item 1 (Picture)
furnace air temperature

18.1	Electric Fireplace(s) Not Present
-------------	---

The electric fireplace and remote control operate as anticipated.

18.2 **Water Heater**
Acceptable

Temperature of the water coming from the water heater: 120 degrees



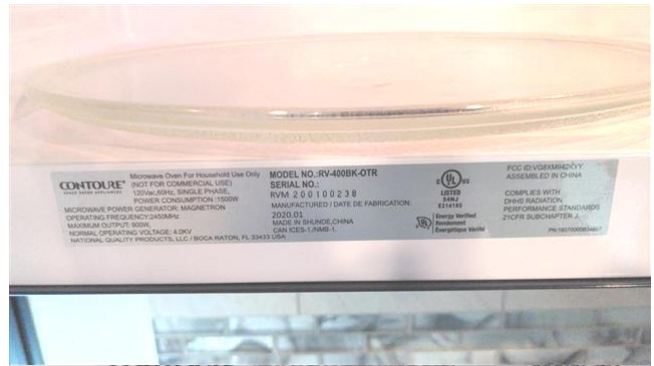
18.2 Item 1 (Picture)
Hot water temperature

18.3 **Microwave**
Acceptable

Overview of the interior of the microwave.



18.3 Item 1 (Picture)
microwave



18.3 Item 2 (Picture)
microwave data plate

18.4 **Cooktop Exhaust Vent**
Acceptable

18.5 **Cooktop**
Acceptable

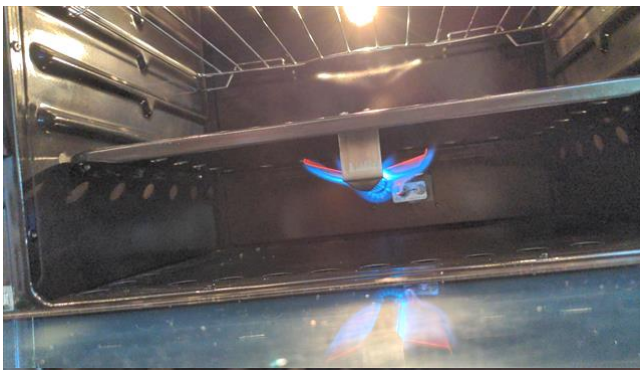
Overview of the cooktop burner flame(s).



18.5 Item 1 (Picture)
cooktop operating

18.6 **Oven**
Acceptable

Overview of the oven.



18.6 Item 1 (Picture)
oven operating

18.7 Freezer
Acceptable

Overview of the freezer.



18.7 Item 1 (Picture)
Freezer Zero degrees

18.8	Refrigerator Acceptable
-------------	-----------------------------------

Overview of the refrigerator.



18.8 Item 1 (Picture)
Refrigerator 30 degrees

18.9	Ice Maker Not Present
-------------	---------------------------------

18.10	Water & Ice Dispenser Not Present
--------------	---

18.11	Washer Not Present
--------------	------------------------------

The closet outside the bathroom is plumbed for a stackable washer/dryer unit.



18.11 Item 1 (Picture)
Closet plumbed for W/D

18.12	Dryer Not Present
--------------	-----------------------------

Overview of the dryer.

18.13	In-House Vacuum System Not Present
--------------	--

Overview of the in-house vacuum system.

18.14	Dishwasher Not Present
--------------	----------------------------------

Overview of the dishwasher.

It is recommended that a qualified RV technician or appropriate service person investigate Life Safety Issues further and correct as needed prior to use.

It is recommended that a qualified RV technician or appropriate service person investigate all issues further and correct as needed.

[Expert RV Inspections & Service LLC](#) does not recommend any technicians or repair facilities.

All costs associated with further inspection fees and repair or replacement of item, component or unit should be considered before you purchase.

19. Life Safety Items



Description

NOTE: The inspector has verified the items in this section.

NOTE: LP Detectors have an estimated service life of 5 years after which time it is recommended they be replaced.

NOTE: CO Detectors have an estimated service life of 5 to 7 years after which time it is recommended they be replaced.

NOTE: Smoke Detectors have an estimated service life of 5 to 10 years after which time it is recommended they be replaced.

NOTE: A proper leak test can only be performed at a gas cooktop or an accessory grill port on the exterior of the RV. If neither of these are present, a Propane Leak Test can't be performed.

Styles & Materials: Life Safety Items

LP Detector Brand:

RV Safe

LP Detector Date:

Three Years Old

LP Detector Test Method:

Tested by Spraying LP

LP Detector Test Result:

Pass

CO Detector Brand:

Combo Unit with LP Detector

CO Detector Date:

Three Years Old

CO Detector Test Result:

Pass

Smoke Detector Brand:

BRK

Smoke Detector Date:

Three Years Old

Smoke Detector Test Result:

Pass

Fire Extinguisher Brand:

Kidde

Minimum 10 B:C Rating - Fire Extinguisher:

Yes

Mounted within 24 Inches of Entrance Door - Fire Extinguisher:

Yes

Secure in Bracket - Fire Extinguisher:

Yes

Gauge Indicates Charged State - Fire Extinguisher:

Yes

Fire Extinguisher Date:

2019

Items: Life Safety Items

19.0

LP Leak System Test

Acceptable

The LP (Propane) Leak Test was performed at the outdoor accessory grill port.

2:12 Begin Test: pressure is 11 in H2O

2:12 Bleed pressure down to 8-9 in H2O

2:18 Pressure held at 8-9 in H2O for > 5 minutes - PASSED LP leak test



19.0 Item 1 (Picture)
Begin



19.0 Item 2 (Picture)
Bled down to 8



19.0 Item 3 (Picture)
Hold pressure x 5 minutes

19.1 LP Detector
Acceptable

LP Detector Data Plate



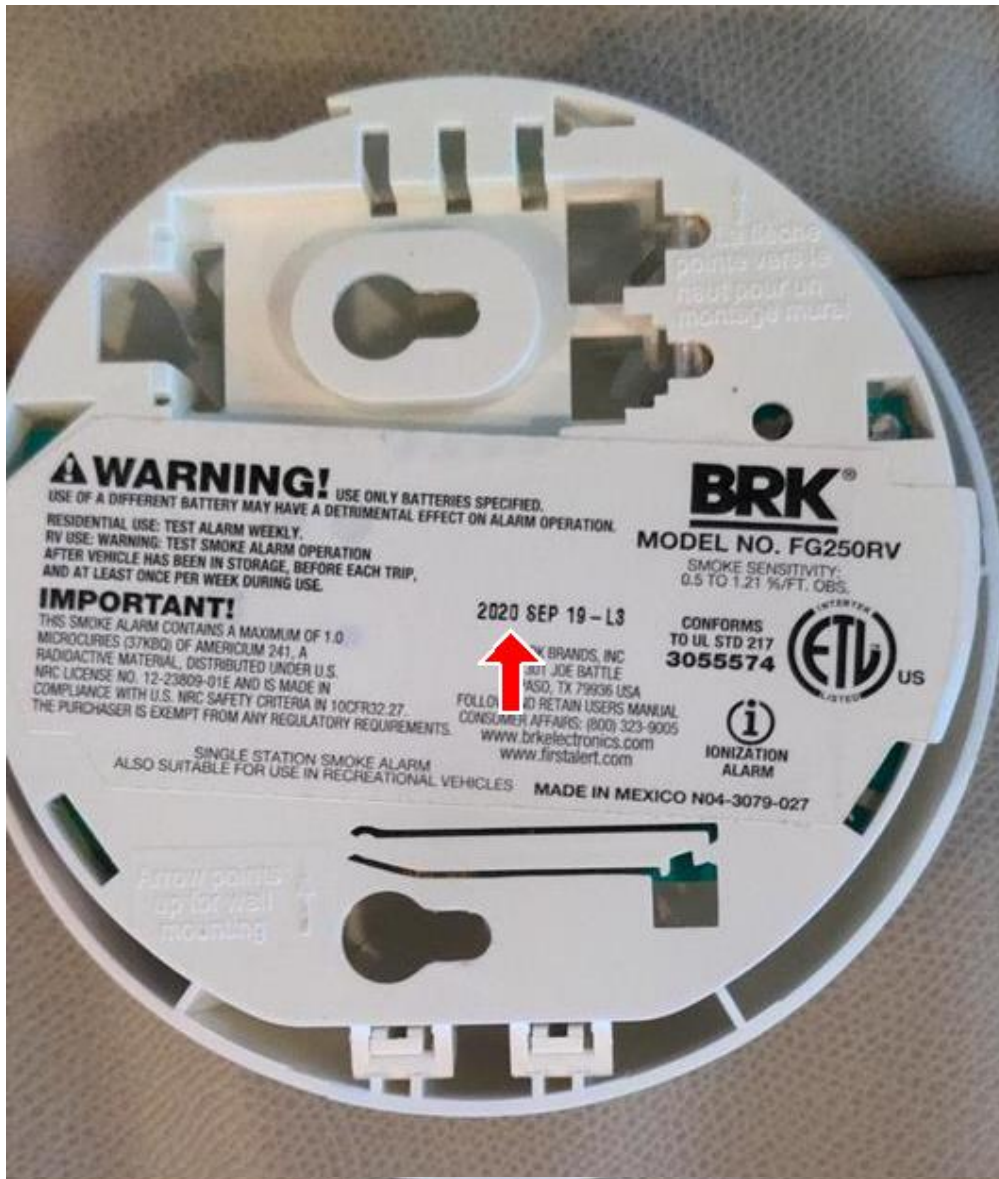
19.1 Item 1 (Picture)
LP/CO detector expires September 2025

19.2 Carbon Monoxide Detector
Acceptable

Combination unit with LP detector

19.3 **Smoke Detector**
Acceptable

Smoke detector



19.3 Item 1 (Picture)
smoke detector

19.4 Fire Extinguisher
Acceptable

The fire extinguisher is less than 12 years old, shows a charged state and is properly mounted and secured.



19.4 Item 1 (Picture)
fire extinguisher

It is recommended that a qualified RV technician or appropriate service person investigate Life Safety Issues further and correct as needed prior to use.

It is recommended that a qualified RV technician or appropriate service person investigate all issues further and correct as needed.

Expert RV Inspections & Service LLC does not recommend any technicians or repair facilities.

All costs associated with further inspection fees and repair or replacement of item, component or unit should be considered before you purchase.

20. Interior Water Systems



Description

NOTE: The inspector has verified the items in this section.

Styles & Materials: Interior Water Systems

Battery Monitor Reading:

Digital Reading

Fresh Water Tank Reading:

3/4

Gray Water Tank #1 Reading:

Empty

Black Water Tank #1 Reading:

Empty

Kitchen Sink - Style:

Double Bowl

Kitchen Sink - Type:

Aluminum

Bathroom Sink - Style:

Single Bowl

Bathroom Type:

Full Bath

Bathroom Sink - Type:

Aluminum

Shower / Tub - Style:

Shower Stall

Shower / Tub - Enclosure Type:

Plastic Doors

Retractable Door

Shower / Tub Drain Functions:

Yes

Toilet Composition Material:

Porcelain

Toilet Ball Valve Retains Water for 15 Minutes:

Yes

Items: Interior Water Systems

20.0 Overview of Kitchen Plumbing
Acceptable

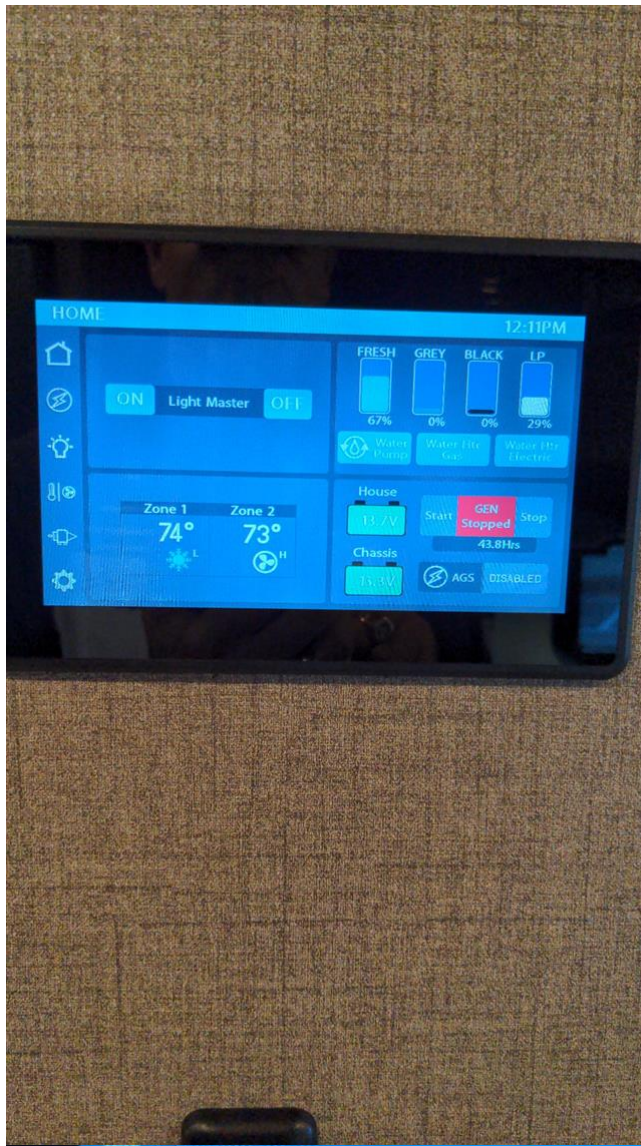
Overview of kitchen plumbing area.



20.0 Item 1 (Picture)
overview of kitchen plumbing

20.1 **Monitor Panel**
Acceptable

Overview of the monitor panel.



20.1 Item 1 (Picture)
monitor panel

20.2 Under Sink Kitchen
Acceptable

Under sink kitchen



20.2 Item 1 (Picture)
kitchen sink plumbingkitchen sink plumbing

20.3 Kitchen Faucet
Acceptable

The kitchen faucet operates as expected.

20.4 Kitchen Sink
Acceptable

Overview of the kitchen sink area.

20.5 Skylights
Acceptable

Overview of the interior of the interior skylight(s).



20.5 Item 1 (Picture)
skylight

20.6 Shower / Tub(s)
Acceptable

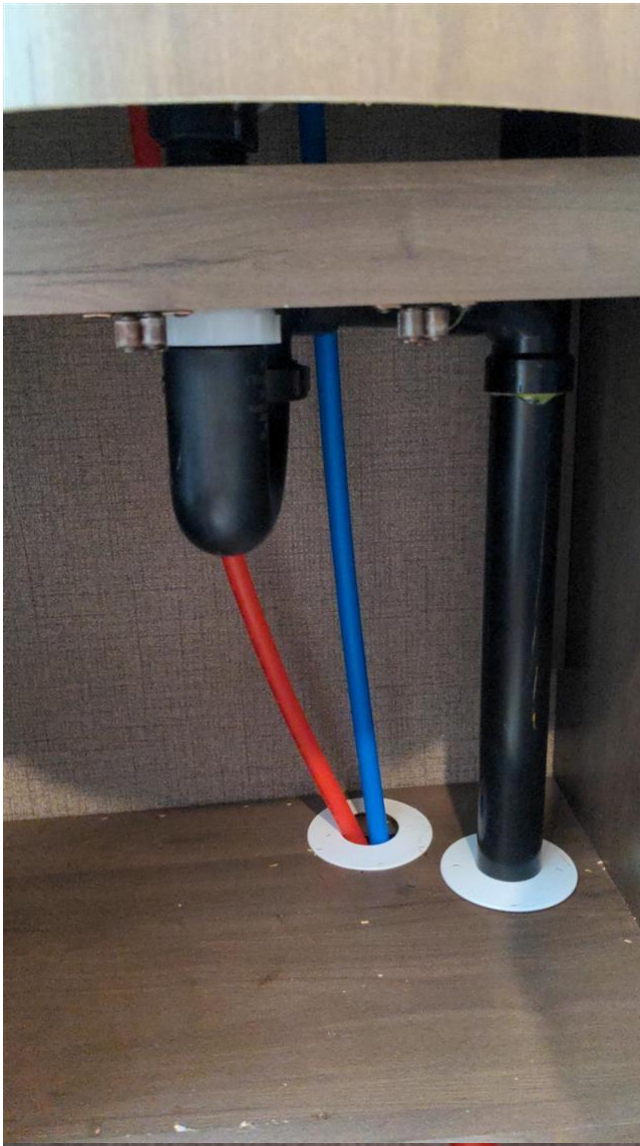
Overview of the shower enclosure.



20.6 Item 1 (Picture)
shower

20.7 Under Sink Bathroom(s)
Acceptable

Overview of bathroom sink plumbing



20.7 Item 1 (Picture)
bathroom sink plumbing

20.8	Bathroom Faucet(s) Acceptable
-------------	---

The bathroom faucet operates as expected.



20.8 Item 1 (Picture)
bathroom faucet

20.9	Bathroom Sink(s) Acceptable
-------------	---------------------------------------

Overview of the bathroom sink(s).

20.10	Toilet(s) Acceptable
--------------	--------------------------------

The toilet holds water and operates as anticipated.

20.11	Water Pump Acceptable
--------------	---------------------------------

The water pump operates as expected.

It is recommended that a qualified RV technician or appropriate service person investigate Life Safety Issues further and correct as needed prior to use.

It is recommended that a qualified RV technician or appropriate service person investigate all issues further and correct as needed.

Expert RV Inspections & Service LLC does not recommend any technicians or repair facilities.

All costs associated with further inspection fees and repair or replacement of item, component or unit should be considered before you purchase.

21(A) . Front AC



Description

NOTE: The inspector has verified the items in this section.

NOTE: The Delta-T average acceptable performance range is 14 to 22 degrees F (8 to 12 degrees C).

NOTE: In high humidity, the range may be lower (12 to 16 degrees F) (7 to 9 degrees C).

NOTE: In desert areas, it may be higher (23 to 26 F) (13 to 15 C).

Styles & Materials: Front AC

Air Conditioner Brand:

Coleman

Air Conditioner Thermostatic Controls:

Dual with Furnace

Air Conditioner Options:

Air Conditioning and Heat Strip

Air Conditioner Air Return Temperature:

Degrees F

Degrees : 73

Air Conditioner Air Output Temperature:

Degrees F

Degrees : 55

Air Conditioner Delta-T:

Degrees F

Degrees : 19 degrees

Items: Front AC

21.0.A	Air Conditioner Overview Acceptable
---------------	---

Air conditioner overview.



21.0.A Item 1 (Picture)
AC temperature

21.1.A	Air Conditioner Filter Acceptable
21.2.A	Heat Mode Not Inspected
21.3.A	Thermostat Acceptable
Overview of the thermostat(s).	
21.4.A	MultiPlex Touch Screen Acceptable

Overview of multitouch screen

It is recommended that a qualified RV technician or appropriate service person investigate Life Safety Issues further and correct as needed prior to use.

It is recommended that a qualified RV technician or appropriate service person investigate all issues further and correct as needed.

[Expert RV Inspections & Service LLC](#) does not recommend any technicians or repair facilities.

All costs associated with further inspection fees and repair or replacement of item, component or unit should be considered before you purchase.

21(B) . Rear AC



Description

NOTE: The inspector has verified the items in this section.

NOTE: The Delta-T average acceptable performance range is 14 to 22 degrees F (8 to 12 degrees C).

NOTE: In high humidity, the range may be lower (12 to 16 degrees F) (7 to 9 degrees C).

NOTE: In desert areas, it may be higher (23 to 26 F) (13 to 15 C).

Styles & Materials: Rear AC

Air Conditioner Brand:

Coleman

Air Conditioner Thermostatic Controls:

Dual with Furnace

Air Conditioner Options:

Air Conditioning and Heat Strip

Air Conditioner Air Return Temperature:

Degrees F

Degrees : 74

Air Conditioner Air Output Temperature:

Degrees F

Degrees : 56

Air Conditioner Delta-T:

Degrees F

Degrees : 19

Items: Rear AC

21.0.B	Air Conditioner Overview Acceptable
---------------	---

Air conditioner overview.



21.0.B Item 1 (Picture)
AC temperature

21.1.B	Air Conditioner Filter Acceptable
21.2.B	Heat Mode Not Inspected
21.3.B	Thermostat Acceptable
Overview of the thermostat(s).	
21.4.B	MultiPlex Touch Screen Acceptable

It is recommended that a qualified RV technician or appropriate service person investigate Life Safety Issues further and correct as needed prior to use.

It is recommended that a qualified RV technician or appropriate service person investigate all issues further and correct as needed.

Expert RV Inspections & Service LLC does not recommend any technicians or repair facilities.

All costs associated with further inspection fees and repair or replacement of item, component or unit should be considered before you purchase.

22. Interior



Description

NOTE: The inspector has verified the items in this section.

Styles & Materials: Interior

Ceiling Vents Type:

Electric Vent with Fan - Controls on Control Panel

Countertop Type:

Solid Surface

Number of Windows Streetside:

Five

Number of Windows Curbside:

Five

Window Type:

Single Pane

Emergency Windows Marked Exit:

Yes

Window Coverings / Blinds Type:

Accordion - not attached at bottom

Flooring Type:

Sheet Vinyl

Flooring Water Damage or Soft Spots:

No

Flooring Evidence of Repairs:

No

Items: Interior

22.0 Overview of the Interior

Acceptable

Overall the interior is in acceptable condition consistent with the age of the RV.



22.0 Item 1 (Picture)
overview of interior back to front



22.0 Item 2 (Picture)
overview of interior front to back

22.1 Previous Repairs

Acceptable

No repairs were detected in the interior

22.2	Ceiling Acceptable
-------------	------------------------------

Overview of the Ceiling.



22.2 Item 1 (Picture)
overview of ceiling

22.3	Ceiling Vents Acceptable
-------------	------------------------------------

Overview of the interior vent fan(s).

22.4	Ceiling Fan Not Present
-------------	-----------------------------------

Overview of the interior vent fan(s).

22.5 TV Antenna Interior Handle

Not Present

Overview of the interior TV antenna handle.



22.5 Item 1 (Picture)

Typical Roof-Mounted TV Antenna Crank Handle

22.6 Lights

Acceptable

Overview of the interior light(s).

22.7	Light Fixtures Acceptable
-------------	-------------------------------------

(1) Overview of the interior light(s).



22.7 Item 1 (Picture)
living area sconce

(2) Overview of the light fixtures.

22.8	Walls Acceptable
-------------	----------------------------

22.9	Cabinets / Pantries Acceptable
-------------	--

Overview of the cabinets and pantries.

22.10	Drawers Acceptable
--------------	------------------------------

Overview of the drawer(s).

22.11 Counter Tops
Acceptable

Overview of the countertop(s).



22.11 Item 1 (Picture)
kitchen countertop

22.12	Windows Acceptable
--------------	------------------------------

Overview of the window(s).



22.12 Item 1 (Picture)
representative interior window

22.13 Emergency Exit Windows

Acceptable

Emergency exit window is located in the extreme rear of the coach in the master bedroom



22.13 Item 1 (Picture)
emergency exit window



22.13 Item 2 (Picture)
emergency exit window confirm operation

22.14 Windows Screens

Acceptable

Overview of the window screen(s).

22.15	Window Covering / Blinds Acceptable
--------------	---

Overview of the blind(s). Accordion blinds are installed over the windows.



22.15 Item 1 (Picture)
representative blindrepresentative blind

22.16	Privacy Curtain(s) Not Present
--------------	--

22.17

Interior Door(s)

Poor

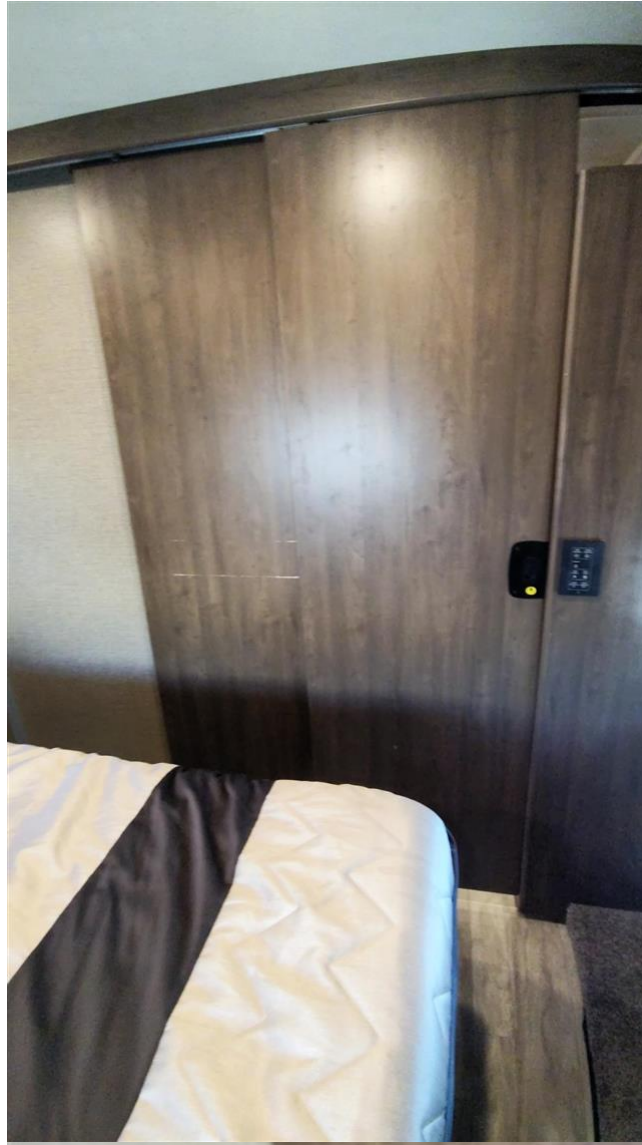


**MINOR
ISSUE**

The interior barn door set in the master bedroom do not operate properly. There are scratches on one of the doors, and the rear door does not go over the bracket on the bottom of the first door as it is supposed to. In addition the inspector could not identify any sort of locking mechanism to secure the door during travel. The door can be manipulated closed but the inspector recommends that the door alignment be assessed by a qualified RV technician.



22.17 Item 1 (Picture)
scratched door



22.17 Item 2 (Picture)
Rear door closed

22.18	Interior Steps/Handrails Acceptable
--------------	---

Overview of the Interior steps



22.18 Item 1 (Picture)
entry steps

22.19

Flooring

Fair



**MINOR
ISSUE**

There are a couple of areas on the flooring that appear to have been stained or scraped with a black adhesive substance, and there is a long scratch beginning at the front of the kitchen counter toward the back of the stove. The stains should be amenable to cleaning.



22.19 Item 1 (Picture)
floor scratch



22.19 Item 2 (Picture)
floor adhesive

It is recommended that a qualified RV technician or appropriate service person investigate Life Safety Issues further and correct as needed prior to use.

It is recommended that a qualified RV technician or appropriate service person investigate all issues further and correct as needed.

Expert RV Inspections & Service LLC does not recommend any technicians or repair facilities.

All costs associated with further inspection fees and repair or replacement of item, component or unit should be considered before you purchase.

23. Furniture



Description

NOTE: The inspector has verified the items in this section.

Styles & Materials: Furniture

Sofa(s) - Type:

Convertible Tri-Fold

Sofa Material:

Vinyl

Theater Seating - Type:

Leg Recline

Theater Seating Material:

Vinyl

Dinette Type:

Booth

Dinette Bunk / Chairs Material:

Vinyl

Closets / Dressers - Types of Hinges:

Exposed

Master Bedroom Bed Type:

King

Items: Furniture

23.0

Overview of the Interior Furniture

Acceptable

Overview of interior furniture



23.0 Item 1 (Picture)
Master Bed

23.1 **Chair(s)**
Acceptable

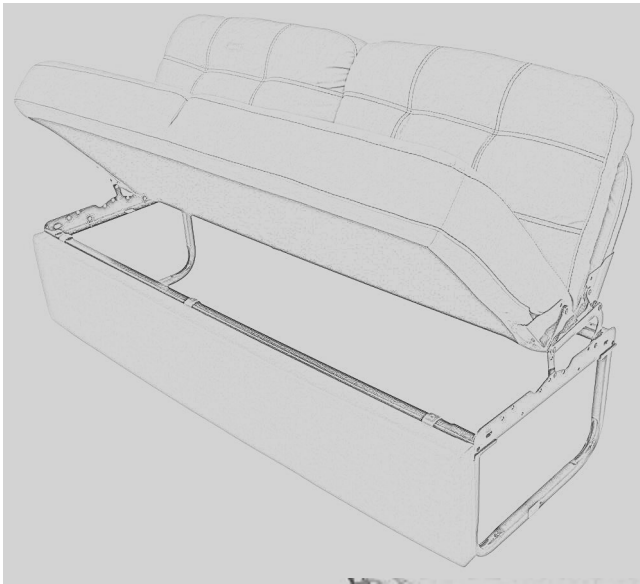
Overview of the chair(s).



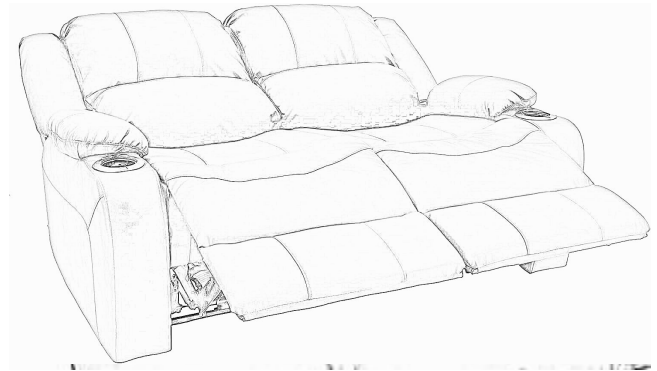
23.1 Item 1 (Picture)
theater seating

23.2 **Sofa(s)**
Acceptable

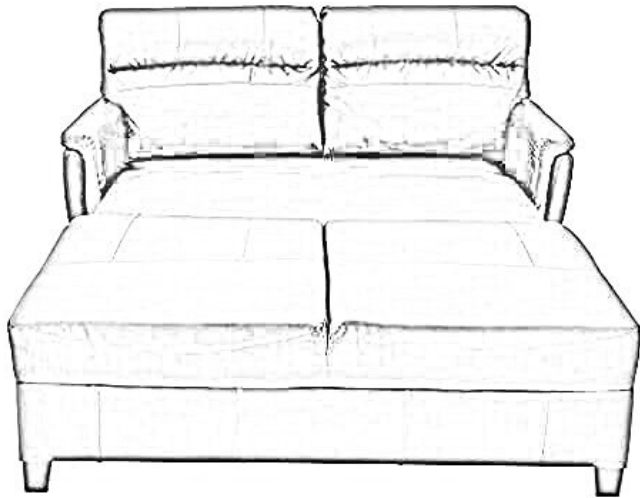
Overview of the sofa(s).



23.2 Item 1 (Picture)
Typical Jacknife Sofa Bed



23.2 Item 2 (Picture)
Typical Reclining Sofa

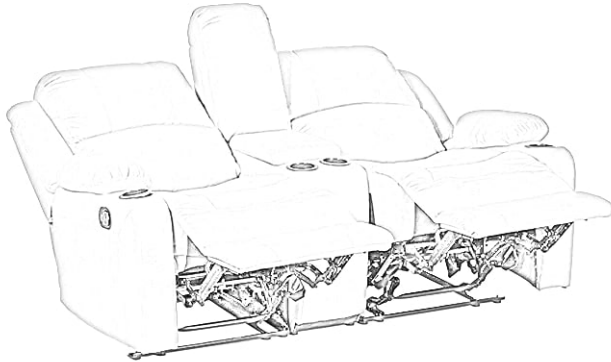


23.2 Item 3 (Picture)
Typical Tri-fold Sofa Bed

23.3 Theater Seating

Acceptable

Overview of the theater seating.



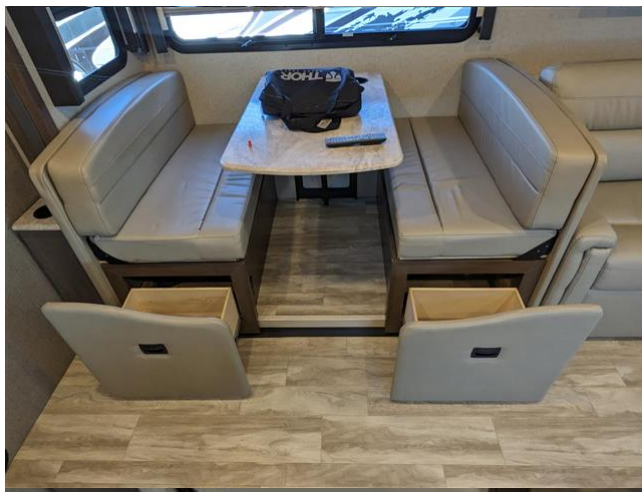
23.3 Item 2 (Picture)
Theater seats

23.3 Item 1 (Picture)
Typical Theater Seats

23.4 Recliner
Not Present

23.5 Dinette
Acceptable

Overview of the dinette.



23.5 Item 1 (Picture)
Dinette

23.6 **Bed(s)**
Acceptable

Overview of the bed(s).



23.6 Item 1 (Picture)
Under bed storage



23.6 Item 2 (Picture)
Master bed

23.7 Drop Down Over Cab Bed (MH)
Acceptable

Overview of the bed above the driver cab area.



23.7 Item 1 (Picture)
drop down over cab bunk

23.8 Closets
Acceptable

Closets Overview



23.8 Item 1 (Picture)
Bedroom Closet



23.8 Item 2 (Picture)
Closet with Captains Chairs Table

23.9 Dressers
Acceptable

Overview of the dresser(s).

It is recommended that a qualified RV technician or appropriate service person investigate Life Safety Issues further and correct as needed prior to use.

It is recommended that a qualified RV technician or appropriate service person investigate all issues further and correct as needed.

Expert RV Inspections & Service LLC does not recommend any technicians or repair facilities.

All costs associated with further inspection fees and repair or replacement of item, component or unit should be considered before you purchase.

24(A) . Outdoor TV



Description

NOTE: The inspector has verified the items in this section.

Styles & Materials: Outdoor TV

Type of Electronics:

Television

Location:

Other

Location : Exterior

Brand Name:

Axxera

Interior Speakers Location:

Cabinet

Interior Speakers Functioning:

Yes

Items: Outdoor TV

24.0.A **Overview**
Acceptable

Overview of outdoor TV



24.0.A Item 1 (Picture)
outdoor TV closed



24.0.A Item 2 (Picture)
outdoor TV open

24.1.A	Unit Works Properly Acceptable
---------------	--

The outdoor TV operates appropriately.



24.1.A Item 1 (Picture)
outdoor TV operational

24.2.A	Unit Properly Mounted and Secured Acceptable
---------------	--

The outdoor TV is properly mounted and secured

24.3.A	Remote Controls Acceptable
---------------	--------------------------------------



A remote was present but did not operate the outdoor TV. The batteries may need to be exchanged.

24.4.A	Antenna Power Booster Operational Not Inspected
---------------	---

It is recommended that a qualified RV technician or appropriate service person investigate Life Safety Issues further and correct as needed prior to use.

It is recommended that a qualified RV technician or appropriate service person investigate all issues further and correct as needed.

[Expert RV Inspections & Service LLC](#) does not recommend any technicians or repair facilities.

All costs associated with further inspection fees and repair or replacement of item, component or unit should be considered before you purchase.

24(B) . Living Room TV



Description

NOTE: The inspector has verified the items in this section.

Styles & Materials: Living Room TV

Type of Electronics:

Television

Location:

Living Room

Brand Name:

Axxera

Interior Speakers Location:

Ceiling

Interior Speakers Functioning:

Yes

Items: Living Room TV

24.0.B

Overview

Acceptable

Electronics TV Overview



24.0.B Item 1 (Picture)

HDMI Splitter

24.1.B	Unit Works Properly Acceptable
---------------	--

Overview of the radio.



24.1.B Item 1 (Picture)
TV operates properly

24.2.B	Unit Properly Mounted and Secured Acceptable
24.3.B	Remote Controls Acceptable
24.4.B	Antenna Power Booster Operational Not Inspected

It is recommended that a qualified RV technician or appropriate service person investigate Life Safety Issues further and correct as needed prior to use.

It is recommended that a qualified RV technician or appropriate service person investigate all issues further and correct as needed.

[Expert RV Inspections & Service LLC](#) does not recommend any technicians or repair facilities.

All costs associated with further inspection fees and repair or replacement of item, component or unit should be considered before you purchase.

24(C) . Living Room TV 2



Description

NOTE: The inspector has verified the items in this section.

Styles & Materials: Living Room TV 2

Type of Electronics:

Television

Location:

Living Room

Brand Name:

Axxera

Interior Speakers Location:

Ceiling

Interior Speakers Functioning:

Yes

Items: Living Room TV 2

24.0.C	Overview Acceptable
--------	-------------------------------

24.1.C	Unit Works Properly Acceptable
---------------	--

Overview of the radio.



24.1.C Item 1 (Picture)
TV operates propertyTV operates property

24.2.C	Unit Properly Mounted and Secured Acceptable
24.3.C	Remote Controls Acceptable
24.4.C	Antenna Power Booster Operational Not Inspected

It is recommended that a qualified RV technician or appropriate service person investigate Life Safety Issues further and correct as needed prior to use.

It is recommended that a qualified RV technician or appropriate service person investigate all issues further and correct as needed.

Expert RV Inspections & Service LLC does not recommend any technicians or repair facilities.

All costs associated with further inspection fees and repair or replacement of item, component or unit should be considered before you purchase.

24(D) . Bedroom TV



Description

NOTE: The inspector has verified the items in this section.

Styles & Materials: Bedroom TV

Type of Electronics:

Television

Location:

Master Bedroom

Brand Name:

Axxera

Interior Speakers Location:

Cabinet

Interior Speakers Functioning:

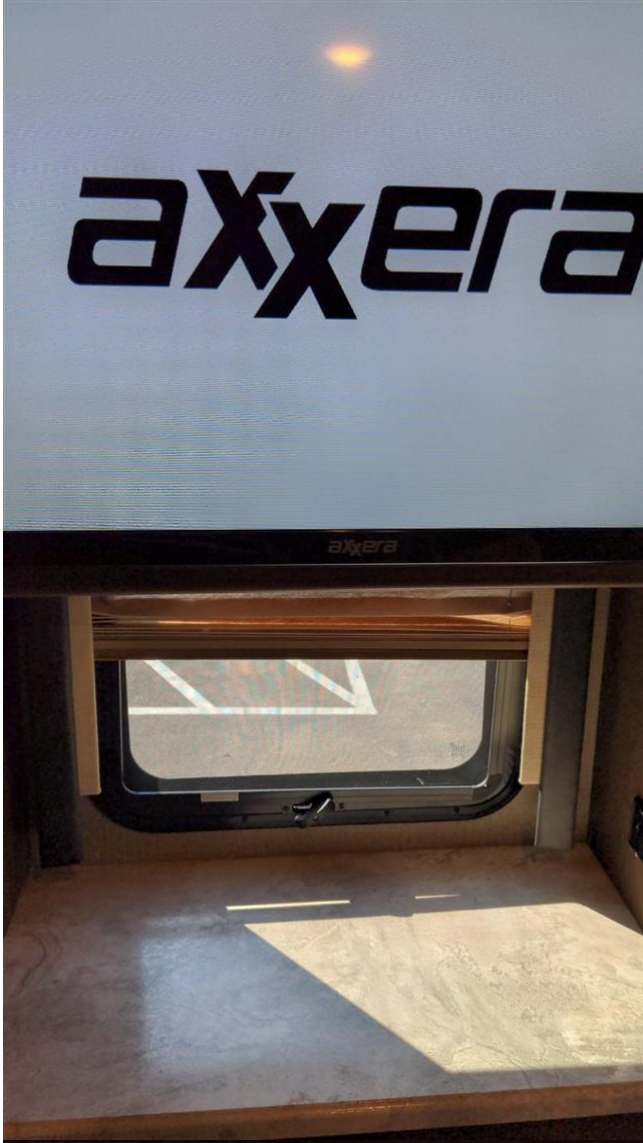
Yes

Items: Bedroom TV

24.0.D	Overview Acceptable
--------	-------------------------------

24.1.D	Unit Works Properly Acceptable
---------------	--

Overview of the radio.



24.1.D Item 1 (Picture)
TV operates properlyTV operates properly

24.2.D	Unit Properly Mounted and Secured Acceptable
---------------	--

24.3.D	Antenna Power Booster Operational Not Inspected
---------------	---

It is recommended that a qualified RV technician or appropriate service person investigate Life Safety Issues further and correct as needed prior to use.

It is recommended that a qualified RV technician or appropriate service person investigate all issues further and correct as needed.

[Expert RV Inspections & Service LLC](#) does not recommend any technicians or repair facilities.

All costs associated with further inspection fees and repair or replacement of item, component or unit should be considered before you purchase.

24(E) . Radio



Description

NOTE: The inspector has verified the items in this section.

Styles & Materials: Radio

Type of Electronics:

Other (Specify)

Extra Info : Dash electronic screen

Location:

Cab Dashboard

Brand Name:

Axxera

Interior Speakers Location:

Cabinet

Interior Speakers Functioning:

Yes

Items: Radio

24.0.E	Overview Acceptable
--------	-------------------------------

24.1.E	Unit Works Properly Acceptable
---------------	--

Overview of the radio.



24.1.E Item 1 (Picture)
dash radio

24.2.E	Unit Properly Mounted and Secured Acceptable
---------------	--

24.3.E	Antenna Power Booster Operational Not Inspected
---------------	---

It is recommended that a qualified RV technician or appropriate service person investigate Life Safety Issues further and correct as needed prior to use.

It is recommended that a qualified RV technician or appropriate service person investigate all issues further and correct as needed.

[Expert RV Inspections & Service LLC](#) does not recommend any technicians or repair facilities.

All costs associated with further inspection fees and repair or replacement of item, component or unit should be considered before you purchase.

25. Leveling System



Description

NOTE: The inspector has verified the items in this section.

Styles & Materials: Leveling System

Leveling System Brand:

Lippert

Leveling System - Type:

Hydraulic

Leveling System Control:

Auto Level

Items: Leveling System

25.0	Leveling System Control Panel Acceptable
-------------	--

Overview of the leveling system control panel.



25.0 Item 1 (Picture)
leveling Control pad

25.1 **Leveling System Jacks**
Acceptable

Overview of the leveling system jacks.



25.1 Item 1 (Picture)
curbside front leveling jack

25.2 Hydraulic Pump

Acceptable

Overview of the hydraulic pump.



25.2 Item 1 (Picture)
hydraulic pump in battery Bay

25.3 Hydraulic Lines

Acceptable

Overview of the leveling system hydraulic pump lines.

It is recommended that a qualified RV technician or appropriate service person investigate Life Safety Issues further and correct as needed prior to use.

It is recommended that a qualified RV technician or appropriate service person investigate all issues further and correct as needed.

Expert RV Inspections & Service LLC does not recommend any technicians or repair facilities.

All costs associated with further inspection fees and repair or replacement of item, component or unit should be considered before you purchase.

26. Engine, Radiator, Transmission



Description

[Expert RV Inspections & Service LLC](#) are not mechanics. The inspection items show the visual condition of the components listed at the time of the inspection.

It is recommended that fluid analysis be performed on the engine fluids, to better understand the condition of the components.

Styles & Materials: Engine, Radiator, Transmission

Engine Brand:

Ford

Engine Model / HP:

7.3L

Model : Triton V8

Engine Type / Location:

Front Gas

Last Oil Change Recorded:

No, Unknown

Last Fuel Filter Change Recorded:

No, Unknown

Radiator - Location:

Front

Transmission - Brand:

Other

Brand : Torqshift

Items: Engine, Radiator, Transmission

26.0	Engine Compartment Overview Acceptable
-------------	--

Engine Compartment Overview



26.0 Item 1 (Picture)
engine compartment

26.1	Engine Running Condition Acceptable
-------------	---

The motorhome engine runs smoothly with no obvious extraneous noises.

26.2	Radiator Acceptable
-------------	-------------------------------

The engine radiator fins are clean, free of debris and without damage.



26.2 Item 1 (Picture)
radiator

26.3	Cooling Fan Acceptable
-------------	----------------------------------

26.4	Engine Oil Level On Dipstick Acceptable
-------------	---

Overview of the engine oil level.

26.5	Transmission Fluid Level On Dipstick Acceptable
-------------	---

Overview of the transmission fluid level.

26.6 **Coolant Fill Level**
Acceptable

Overview of the coolant level



26.6 Item 1 (Picture)
coolant overflow reservoir

26.7 **Windshield Washer Fluid Level**
Acceptable

Overview of the washer fluid level.



26.7 Item 1 (Picture)
windshield fluid reservoir reservoir

26.8 Hoses Condition
Acceptable

The engine hoses showed no evidence of damage or leaking.



26.8 Item 1 (Picture)
engine hoses

26.9 Belt Condition
Not Inspected

It is recommended that a qualified RV technician or appropriate service person investigate Life Safety Issues further and correct as needed prior to use.

It is recommended that a qualified RV technician or appropriate service person investigate all issues further and correct as needed.

[Expert RV Inspections & Service LLC](#) does not recommend any technicians or repair facilities.

All costs associated with further inspection fees and repair or replacement of item, component or unit should be considered before you purchase.

27. Driver Cab Area



Description

NOTE: The inspector has verified the items in this section.

Styles & Materials: Driver Cab Area

Engine Start Method:

Key
Start Button

Engine Starts:

Yes

Engine Battery Assist Feature Present:

Yes

Engine Odometer Reading:

Miles
Total : 4631

LCD Display Location:

Center Dash

Tire Pressure Monitoring System Display:

Not Present

Fuel Level:

Less Than 1/4 Tank

Oil Pressure Reading:

Normal

Dash AC Temperature:

Fahrenheit
Temperature : 60

Windshield Wipers Operate:

Yes

Windshield Washer Fluid Dispenses:

Yes

Dash Heat Temperature:

Fahrenheit
Temperature : 89

Windows Type:

Manual

Mirrors Type:

Electric With Heat

Dash Radio Brand:

Unknown

Driver Seat Operation:

Electric & Manual

Driver Seat Seat Belt Operates:

Yes

Passenger Seat Operation:

Manual

Winshield Cover:

Electric Shade

Dash Fan(s):

Driver's and Passenger's Sides

Items: Driver Cab Area

27.0

Overview of the Driver's Cab Area

Acceptable

Overview of driver cab area



27.0 Item 1 (Picture)
driver cab area

27.1

Dashboard

Acceptable

Overview of the dashboard.

27.2

Knobs / Buttons

Acceptable

Overview of the dashboard knobs.

27.3

Dash AC

Acceptable

Dash AC Temperature

27.4

Dash Heat

Acceptable

Dash Heat Temperature

27.5

Horn

Acceptable

The dash horn(s) operate as expected.

27.6

Tilt / Telescoping Steering Wheel

Acceptable

The steering column adjustment / tilting wheel mechanism operates acceptably.

27.7

Windshield Wipers

Acceptable

Overview of the windshield wipers.

27.8

Mirrors

Acceptable

Overview of the mirrors.

27.9	Windows Acceptable
-------------	------------------------------

Overview of the windows.

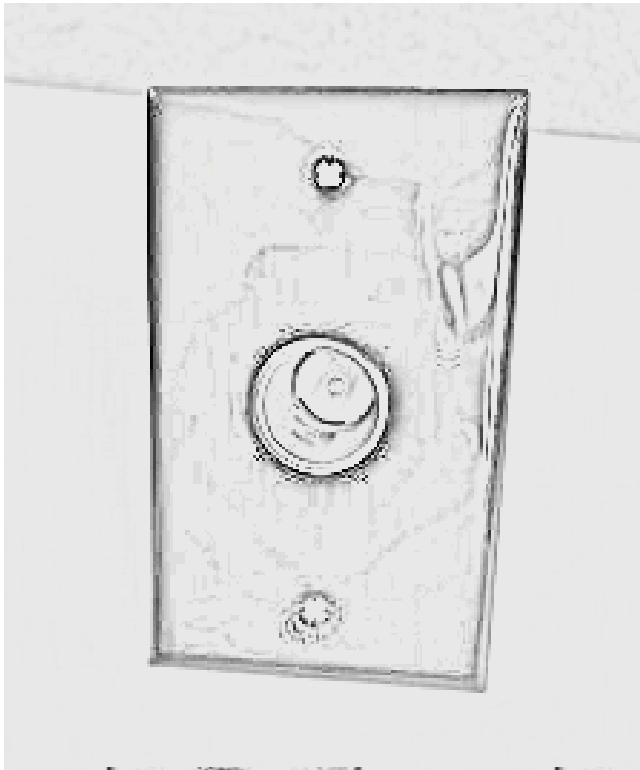
27.10	Driver Cab / Map Lights Acceptable
--------------	--

Overview of the light(s) in the driver cab area.

27.11	Fans Acceptable
--------------	---------------------------

27.12	12 Volt Power Outlet(s) Acceptable
--------------	--

Overview of the 12 volt outlet(s).



27.12 Item 1 (Picture)
Typical 12 Volt Outlet

27.13	Dash Radio Acceptable
--------------	---------------------------------

Overview of the dash radio.

27.14	LCD Display Monitor Acceptable
--------------	--

27.15	Rear View Camera Acceptable
--------------	---------------------------------------

Rear View Camera Overview

27.16	Streetside Camera Acceptable
--------------	--

Streetside Camera Overview

27.17	Curbside Camera Acceptable Curbside Camera Overview
27.18	Windshield Covers Acceptable The night privacy shade for the front windshield will not operate if the ignition key is inserted and set to the ON position.
27.19	Driver Seat Acceptable Overview of the driver seat.
27.20	Seatbelts Acceptable The seat belts extend, lock into place and retract as expected and have minimal wear.
27.21	Overview of the Passenger's Cab Area Acceptable
27.22	Passenger Cab Area Controls Acceptable Overview of the passenger cab area controls.
27.23	Passenger Seat Acceptable Overview of the passenger seat.

It is recommended that a qualified RV technician or appropriate service person investigate Life Safety Issues further and correct as needed prior to use.

It is recommended that a qualified RV technician or appropriate service person investigate all issues further and correct as needed.

[Expert RV Inspections & Service LLC](#) does not recommend any technicians or repair facilities.

All costs associated with further inspection fees and repair or replacement of item, component or unit should be considered before you purchase.

28(A) . Front Curbside



Description

NOTE: The National Transportation Safety Board (NTSB) recommends that all tires older than six (6) years be replaced, regardless of their condition.

Styles & Materials: Front Curbside

Tire - Brand:

Michelin

Tire - Size:

235/80R22.5

Tire - DOT Date:

Visually Verified
WWYY : 0920

Load Range:

G

Load Capacity:

4410 lbs

Tire - Maximum Air Pressure:

120 PSI

Tire - Current Air Pressure:

Tire Gauge Reading (psi)
PSI : 120

Tire Wear Pattern:

No Abnormal Wear - Even Wear Noted

Valve Stem Extensions Present:

No

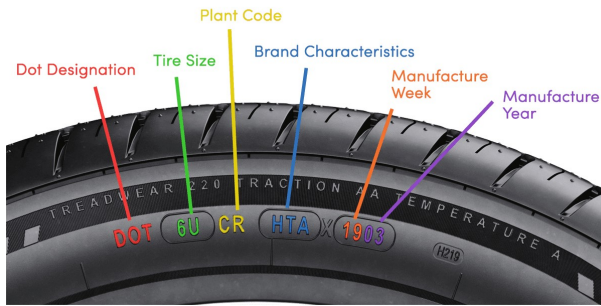
Items: Front Curbside

28.0.A

Tire Age

Acceptable

The tire's DOT codes indicate a manufacture date of: 0920



28.0.A Item 1 (Picture)

Typical DOT Tire Codes Annotated



28.0.A Item 2 (Picture)

Mfr Date 09-20

28.1.A

Tire Condition

Acceptable

28.2.A

Valve Stem

Acceptable

Overview of the valve stem(s).

28.3.A

Tire Pressure

Acceptable

Tire Pressure

28.4.A

Tire Pressure Monitoring System (TPMS)

Not Present

28.5.A

Tire Valve Stems

Acceptable

28.6.A	Wheel Assembly Acceptable
---------------	-------------------------------------

Overview of the wheel assembly.

28.7.A	Wheel Well Acceptable
---------------	---------------------------------

Overview of the wheel well.

It is recommended that a qualified RV technician or appropriate service person investigate Life Safety Issues further and correct as needed prior to use.

It is recommended that a qualified RV technician or appropriate service person investigate all issues further and correct as needed.

[Expert RV Inspections & Service LLC](#) does not recommend any technicians or repair facilities.

All costs associated with further inspection fees and repair or replacement of item, component or unit should be considered before you purchase.

28(B) . Outside Curbside Drive Axle



Description

NOTE: The National Transportation Safety Board (NTSB) recommends that all tires older than six (6) years be replaced, regardless of their condition.

Styles & Materials: Outside Curbside Drive Axle

Tire - Brand:

Michelin

Tire - Size:

235/80R22.5

Tire - DOT Date:

Unable to Visually Verify

Load Range:

G

Load Capacity:

4410 lbs

Tire - Maximum Air Pressure:

120 PSI

Tire - Current Air Pressure:

Tire Gauge Reading (psi)
PSI : 120

Tire Wear Pattern:

No Abnormal Wear - Even Wear Noted

Valve Stem Extensions Present:

No

Items: Outside Curbside Drive Axle

28.0.B	Tire Age Acceptable
---------------	-------------------------------

The tire's DOT codes indicate a manufacture date of: undetermined



28.0.B Item 1 (Picture)
Typical DOT Tire Codes Annotated

28.1.B	Tire Condition Acceptable
---------------	-------------------------------------

28.2.B	Valve Stem Acceptable
---------------	---------------------------------

Overview of the valve stem(s).

28.3.B	Tire Pressure Acceptable
	Tire Pressure
28.4.B	Tire Pressure Monitoring System (TPMS) Not Present
28.5.B	Tire Valve Stems Acceptable
28.6.B	Wheel Assembly Acceptable
	Overview of the wheel assembly.
28.7.B	Wheel Well Acceptable
	Overview of the wheel well.

It is recommended that a qualified RV technician or appropriate service person investigate Life Safety Issues further and correct as needed prior to use.

It is recommended that a qualified RV technician or appropriate service person investigate all issues further and correct as needed.

[Expert RV Inspections & Service LLC](#) does not recommend any technicians or repair facilities.

All costs associated with further inspection fees and repair or replacement of item, component or unit should be considered before you purchase.

28(C) . Inside Curbside Drive Axle



Description

NOTE: The National Transportation Safety Board (NTSB) recommends that all tires older than six (6) years be replaced, regardless of their condition.

Styles & Materials: Inside Curbside Drive Axle

Tire - Brand:

Michelin

Tire - Size:

235/80R22.5

Tire - DOT Date:

Unable to Visually Verify

Load Range:

G

Load Capacity:

4410 lbs

Tire - Maximum Air Pressure:

120 PSI

Tire - Current Air Pressure:

Tire Gauge Reading (psi)
PSI : 120

Tire Wear Pattern:

No Abnormal Wear - Even Wear Noted

Valve Stem Extensions Present:

No

Items: Inside Curbside Drive Axle

28.0.C	Tire Age Acceptable
---------------	-------------------------------

The tire's DOT codes indicate a manufacture date of: undetermined



28.0.C Item 1 (Picture)
Typical DOT Tire Codes Annotated

28.1.C	Tire Condition Acceptable
---------------	-------------------------------------

28.2.C	Valve Stem Acceptable
---------------	---------------------------------

Overview of the valve stem(s).

28.3.C	Tire Pressure Acceptable
Tire Pressure	
28.4.C	Tire Pressure Monitoring System (TPMS) Not Present
28.5.C	Tire Valve Stems Acceptable
28.6.C	Wheel Assembly Acceptable
Overview of the wheel assembly.	
28.7.C	Wheel Well Acceptable
Overview of the wheel well.	

It is recommended that a qualified RV technician or appropriate service person investigate Life Safety Issues further and correct as needed prior to use.

It is recommended that a qualified RV technician or appropriate service person investigate all issues further and correct as needed.

[Expert RV Inspections & Service LLC](#) does not recommend any technicians or repair facilities.

All costs associated with further inspection fees and repair or replacement of item, component or unit should be considered before you purchase.

28(D) . Outside Streetside Drive Axle



Description

NOTE: The National Transportation Safety Board (NTSB) recommends that all tires older than six (6) years be replaced, regardless of their condition.

Styles & Materials: Outside Streetside Drive Axle

Tire - Brand:

Michelin

Tire - Size:

235/80R22.5

Tire - DOT Date:

Unable to Visually Verify

Load Range:

G

Load Capacity:

4410 lbs

Tire - Maximum Air Pressure:

120 PSI

Tire - Current Air Pressure:

Tire Gauge Reading (psi)
PSI : 120

Tire Wear Pattern:

No Abnormal Wear - Even Wear Noted

Valve Stem Extensions Present:

No

Items: Outside Streetside Drive Axle

28.0.D	Tire Age Acceptable
---------------	-------------------------------

The tire's DOT codes indicate a manufacture date of: undetermined



28.0.D Item 1 (Picture)
Typical DOT Tire Codes Annotated

28.1.D	Tire Condition Acceptable
---------------	-------------------------------------

28.2.D	Valve Stem Acceptable
---------------	---------------------------------

Overview of the valve stem(s).

28.3.D	Tire Pressure Acceptable
Tire Pressure	
28.4.D	Tire Pressure Monitoring System (TPMS) Not Present
28.5.D	Tire Valve Stems Acceptable
28.6.D	Wheel Assembly Acceptable
Overview of the wheel assembly.	
28.7.D	Wheel Well Acceptable
Overview of the wheel well.	

It is recommended that a qualified RV technician or appropriate service person investigate Life Safety Issues further and correct as needed prior to use.

It is recommended that a qualified RV technician or appropriate service person investigate all issues further and correct as needed.

[Expert RV Inspections & Service LLC](#) does not recommend any technicians or repair facilities.

All costs associated with further inspection fees and repair or replacement of item, component or unit should be considered before you purchase.

28(E) . Inside Streetside Drive Axle



Description

NOTE: The National Transportation Safety Board (NTSB) recommends that all tires older than six (6) years be replaced, regardless of their condition.

Styles & Materials: Inside Streetside Drive Axle

Tire - Brand:

Michelin

Tire - Size:

235/80R22.5

Tire - DOT Date:

Unable to Visually Verify

Load Range:

G

Load Capacity:

4410 lbs

Tire - Maximum Air Pressure:

120 PSI

Tire - Current Air Pressure:

Tire Gauge Reading (psi)
PSI : 120

Tire Wear Pattern:

No Abnormal Wear - Even Wear Noted

Valve Stem Extensions Present:

No

Items: Inside Streetside Drive Axle

28.0.E	Tire Age Acceptable
---------------	-------------------------------

The tire's DOT codes indicate a manufacture date of: undetermined



28.0.E Item 1 (Picture)
Typical DOT Tire Codes Annotated

28.1.E	Tire Condition Acceptable
---------------	-------------------------------------

28.2.E	Valve Stem Acceptable
---------------	---------------------------------

Overview of the valve stem(s).

28.3.E	Tire Pressure Acceptable
	Tire Pressure
28.4.E	Tire Pressure Monitoring System (TPMS) Not Present
28.5.E	Tire Valve Stems Acceptable
28.6.E	Wheel Assembly Acceptable
	Overview of the wheel assembly.
28.7.E	Wheel Well Acceptable
	Overview of the wheel well.

It is recommended that a qualified RV technician or appropriate service person investigate Life Safety Issues further and correct as needed prior to use.

It is recommended that a qualified RV technician or appropriate service person investigate all issues further and correct as needed.

[Expert RV Inspections & Service LLC](#) does not recommend any technicians or repair facilities.

All costs associated with further inspection fees and repair or replacement of item, component or unit should be considered before you purchase.

28(F) . Front Streetside



Description

NOTE: The National Transportation Safety Board (NTSB) recommends that all tires older than six (6) years be replaced, regardless of their condition.

Styles & Materials: Front Streetside

Tire - Brand:

Michelin

Tire - Size:

235/80R22.5

Tire - DOT Date:

Visually Verified
WWYY : 1020

Load Range:

G

Load Capacity:

4410 lbs

Tire - Maximum Air Pressure:

120 PSI

Tire - Current Air Pressure:

Tire Gauge Reading (psi)
PSI : 120

Tire Wear Pattern:

No Abnormal Wear - Even Wear Noted

Valve Stem Extensions Present:

No

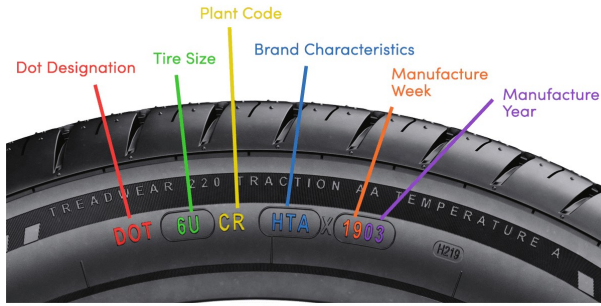
Items: Front Streetside

28.0.F

Tire Age

Acceptable

The tire's DOT codes indicate a manufacture date of: 1020



28.0.F Item 1 (Picture)

Typical DOT Tire Codes Annotated



28.0.F Item 2 (Picture)

28.1.F

Tire Condition

Acceptable

28.2.F

Valve Stem

Acceptable

Overview of the valve stem(s).

28.3.F

Tire Pressure

Acceptable

Tire Pressure

28.4.F

Tire Pressure Monitoring System (TPMS)

Not Present

28.5.F

Tire Valve Stems

Acceptable

28.6.F

Wheel Assembly

Acceptable

Overview of the wheel assembly.

28.7.F

Wheel Well

Acceptable

Overview of the wheel well.

It is recommended that a qualified RV technician or appropriate service person investigate Life Safety Issues further and correct as needed prior to use.

It is recommended that a qualified RV technician or appropriate service person investigate all issues further and correct as needed.

[Expert RV Inspections & Service LLC](#) does not recommend any technicians or repair facilities.

All costs associated with further inspection fees and repair or replacement of item, component or unit should be considered before you purchase.

29. Chassis / Undercarriage



Description

NOTE: Due to insurance restrictions, the motor home can NOT be driven by the inspector.

NOTE: Due to the lack of clearance under the motor home and safety concerns, the inspector will conduct the following visual inspections from the outer perimeter of the motor home.

Styles & Materials: Chassis / Undercarriage

Number of Axles:

Two

Type of Brakes:

Hydraulic

Frame Excessive Rust:

No

Frame Damage Present:

No

Underbelly - Type:

Exposed

Underbelly - Signs of Water Leak:

No

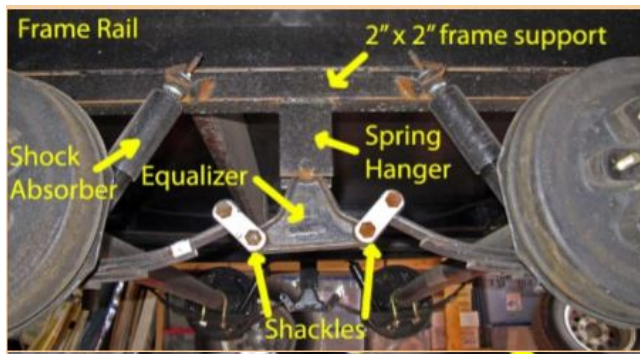
Items: Chassis / Undercarriage

29.0	Overview of Chassis and Undercarriage Acceptable Overview of the chassis and undercarriage.
29.1	Brakes Acceptable
29.2	Frame Acceptable Overview of the RV frame.
29.3	Shock Absorber(s) Acceptable Overview of the shock absorbers

29.4 Running Gear

Acceptable

Overview of the running gear.



29.4 Item 1 (Picture)

Typical Running Gear Annotated

29.5 Steering Components

Acceptable

Overview of the steering components.

29.6 Oil Leaks

Acceptable

There were no apparent oil or fluid leaks under the coach after 20 minutes of engine operation.

29.7 Exhaust Leaks

Acceptable

No exhaust leaks were seen during the inspection.

29.8 Transmission Fluid Leaks

Acceptable

There were no apparent oil or fluid leaks under the coach after 20 minutes of engine operation.

29.9 Underbelly - Condition

Acceptable

It is recommended that a qualified RV technician or appropriate service person investigate Life Safety Issues further and correct as needed prior to use.

It is recommended that a qualified RV technician or appropriate service person investigate all issues further and correct as needed.

[Expert RV Inspections & Service LLC](#) does not recommend any technicians or repair facilities.

All costs associated with further inspection fees and repair or replacement of item, component or unit should be considered before you purchase.

30. RV Status at Inspection Completion

Items: RV Status at Inspection Completion

30.0

Overall RV Status at Inspection Completion

Acceptable

NOTICE

The inspector left the RV in the same condition as was evident upon arrival, excepting for any life-safety issues, which were either rectified by the inspector or the seller / dealer was notified of the issue(s) in question.

30.1

RV Exterior Images at Inspection Completion

Acceptable

Overview of RV condition at completion of inspection



30.1 Item 1 (Picture)
street side



30.1 Item 2 (Picture)
curbside

30.2 RV Interior Images at Inspection Completion
Acceptable

Overview of interior of RV at completion of inspection



30.2 Item 1 (Picture)
front to back



30.2 Item 2 (Picture)
back to front

31. RV Inspection Completion Checklist

Items: RV Inspection Completion Checklist

31.0	Motorhome Parking Brake Set YES
-------------	---



For safety reasons, the motorhome parking brake was set even if it was not set at the beginning of the inspection.

31.1	Leveling System Returned to State of Inspection Start No
-------------	--

The leveling system was set to auto level and left at auto level upon direction of the chief technician.

31.2	All RV Slides Retracted if Extended by Inspector No
-------------	---

The curbside slide retracted only halfway and would not retract further. a lead technician was called and evaluated the slide and stated that it would need to be checked by a RV technician for a loose wire.



31.2 Item 1 (Picture)

31.3	All RV Awnings Retracted if Extended by Inspector YES
31.4	Interior Lights Turned Off if Turned On During Inspection YES
31.5	Interior Appliances Turned Off If Turned On During Inspection YES
31.6	Doors and Windows Stowed / Restored to Original Positions YES
31.7	Propane Turned Off at Source(s) If Turned On By Inspector YES
31.8	Air Conditioner(s) Returned to State at Beginning of Inspection YES
31.9	Furnace(s) Returned to State at Beginning of Inspection YES

31.10	Refrigerator / Freezer Returned to State at Beginning of Inspection YES
31.11	Water Heater / Hydronic System Returned to State at Beginning of Inspection YES
31.12	Water Pump Returned to State at Beginning of Inspection YES
31.13	City Water Source Turned Off if Turned On By Inspector YES
31.14	City Water Supply Hose Disconnected and Stowed if Attached By Inspector YES
31.15	Drain Hose Removed and Stored If Attached By Inspector Not Applicable
31.16	Generator Turned Off YES
31.17	Shore / Pedestal Power Breaker Turned Off if Turned On By Inspector YES
31.18	Power Cord Disconnected and Stowed if Attached by Inspector YES
31.19	Battery Disconnect Switch Returned to Original Position YES
31.20	RV Locked and Keys Returned to Dealer / Seller No

The keys were left in the ignition per direction of the lead technician

31.21	RV Keys Left in RV Per Dealer / Seller Instructions YES
31.22	All Inspector's Tools / Supplies / Waste Removed from Site YES
31.23	Seller / Dealer Notified of Completed Inspection YES

Life Safety

The following items indicate that the condition is a **LIFE SAFETY ISSUE**. It could cause accident or harm.

It is recommended that a qualified RV technician or appropriate service person investigate further and correct as needed prior to use.

Expert RV Inspections & Service LLC does not recommend any technicians or repair facilities.

All costs associated with further inspection fees and repair or replacement of item, component or unit should be considered before you purchase.

16. Electrical

16.18

Generator

Fair



CORRECT PRIOR TO USE!

Overview of the generator. The generator electrical outlet has its rubber caps deteriorated and is lying in pieces at the bottom of the generator housing. The inspector recommends that these electrical connections be evaluated by a qualified RV technician prior to use. This is a life safety issue due to the risk of potential electrical shocks.



16.18 Item 1 (Picture)
damaged electrical power covers



16.18 Item 2 (Picture)
overview of generator



16.18 Item 3 (Picture)
generator data plate



X
16.18 Item 4 (Video)
Video of generator in operation



16.18 Item 5 (Picture)
Generator Hours = 43.8

It is recommended that a qualified RV technician or appropriate service person investigate further and correct as needed.

Expert RV Inspections & Service LLC does not recommend any technicians or repair facilities.

All costs associated with further inspection fees and repair or replacement of item, component or unit should be considered before you purchase.

Major

The following items indicate that the condition is a **MAJOR ISSUE**. It impacts longevity of the vehicle, can be a possible costly repair and/or warrants immediate repair.

It is recommended that a qualified RV technician or appropriate service person investigate further and correct as needed.

[Expert RV Inspections & Service LLC](#) does not recommend any technicians or repair facilities.

All costs associated with further inspection fees and repair or replacement of item, component or unit should be considered before you purchase.

9. Curbside Slideout(s)

9.6

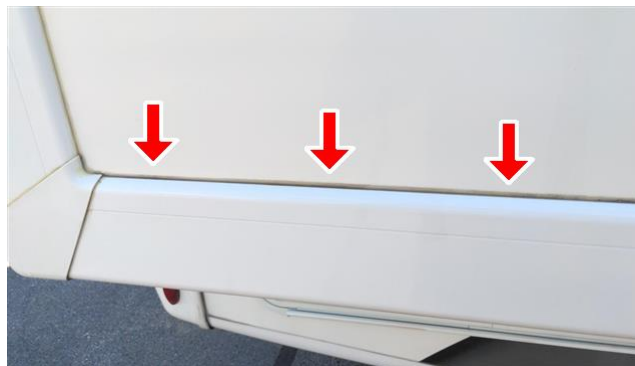
Slideout T-Molding Trim

Fair



(1) Overview of Slideout T-Molding Trim

The sealant on the t-molding on the curbside slide out is brittle and dried out. There are no obvious defects at this time, but the inspector recommends that the sealant be addressed by a qualified RV technician.



9.6 Item 1 (Picture)
T-molding sealant



(2) The lower front T-molding corner is loose and the adhesive is failing. This is a potential source of water intrusion, or it could be lost during travel.. The inspector recommends that the trim be repaired by a qualified RV technician.



9.6 Item 2 (Picture)

It is recommended that a qualified RV technician or appropriate service person investigate further and correct as needed.

Expert RV Inspections & Service LLC does not recommend any technicians or repair facilities.

All costs associated with further inspection fees and repair or replacement of item, component or unit should be considered before you purchase.

Minor

The following items indicate that the condition is a **MINOR ISSUE**. It does not impact the operation or use of the vehicle and can possibly be repaired later.

It is recommended that a qualified RV technician or appropriate service person investigate further and correct as needed.

Expert RV Inspections & Service LLC does not recommend any technicians or repair facilities.

All costs associated with further inspection fees and repair or replacement of item, component or unit should be considered before you purchase.

6. Entrance Area

6.4

Main Screen Door

Acceptable



Overview of the screen door.

The screen door does not remain attached to the entry door by default. When the screen door is attached to the door, and the door is closed, when the the door is reopened, the screen door remains closed.

The electric step does not operate unless the screen door is opened.

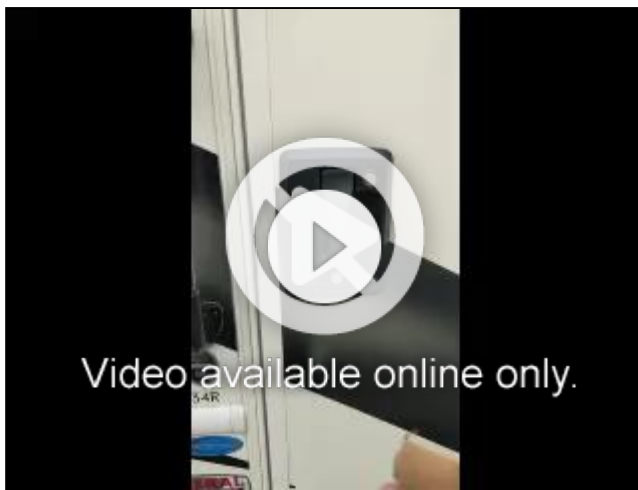
This may be a feature of the coach by design of the manufacturer, however the inspector recommends that the door mechanism be evaluated by a qualified RV technician for any issues.



6.4 Item 1 (Picture)
screen door closed



6.4 Item 2 (Picture)
screen door open and attached to door



X
6.4 Item 3 (Video)
Video Screen Door Not Remaining Attached

7(A) . Main Awning Front

7.0.A

Awning

Acceptable



**MINOR
ISSUE**

The awning length is determined from manufacturer and/or dealer specifications and literature available for review by the inspector.

The fabric at the beginning of the awning roll is visibly discolored from prolonged contact with the awning roll mechanism.



7.0.A Item 1 (Picture)
Main Awning



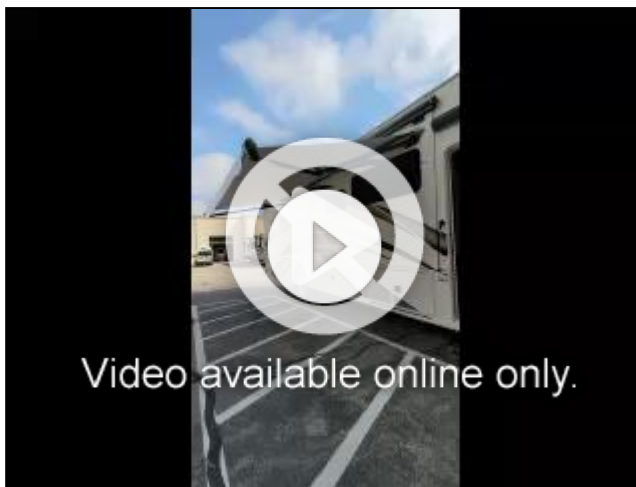
7.0.A Item 2 (Picture)
awning fabric on top



7.0.A Item 3 (Picture)
faded awning fabric at upper edge



7.0.A Item 4 (Picture)
Awning fabric condition underneath



X
7.0.A Item 5 (Video)
Video Awning Retraction

12. Streetside Slideout(s)

12.3

Slideout Floor

Acceptable



Overview of slide out floor

There is a small defect in the center area of the slide out floor which could be a source of water intrusion. The inspector recommends that the area be addressed by a qualified RV technician and resealed.



12.3 Item 1 (Picture)
slide out floor overview



12.3 Item 2 (Picture)
slide out floor small defect



12.3 Item 3 (Picture)
slide up floor detail one



12.3 Item 4 (Picture)
Slidell floor detail too

17. Roof Exterior

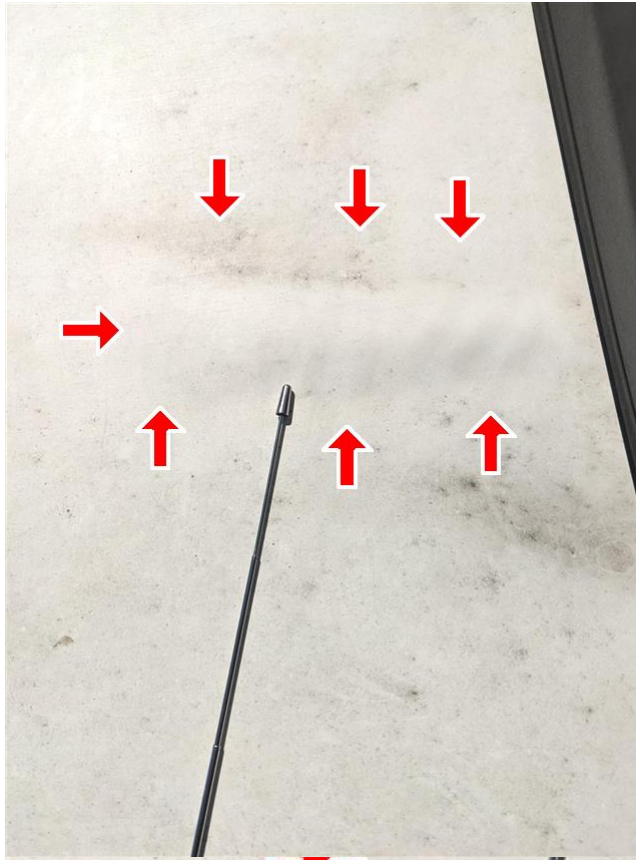
17.0

Overview of the Roof

Acceptable



(2) There are multiple areas of isolated bubbles in the roof membrane. The inspector found no areas of softness or crunching to suggest water damage. While many manufacturers claim such findings to be normal, the inspector recommends that the roof be inspected by a qualified RV technician for defects.



17.0 Item 3 (Picture)
Bubble in roof membrane

17.1

Lap Sealant

Fair



Overview of the lap sealant. In general the lap sealant is dry but not brittle. While no obvious areas that could lead to water intrusion were found, the inspector recommends that the roof be inspected and addressed by a qualified RV roof technician.



17.1 Item 1 (Picture)
lap sealant example



17.1 Item 2 (Picture)



17.1 Item 3 (Picture)
Lap Sealant

17.2

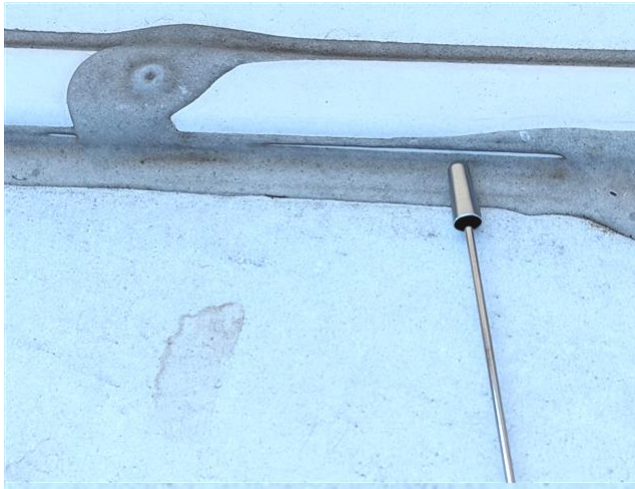
Front Cap, Joints and Seals

Fair

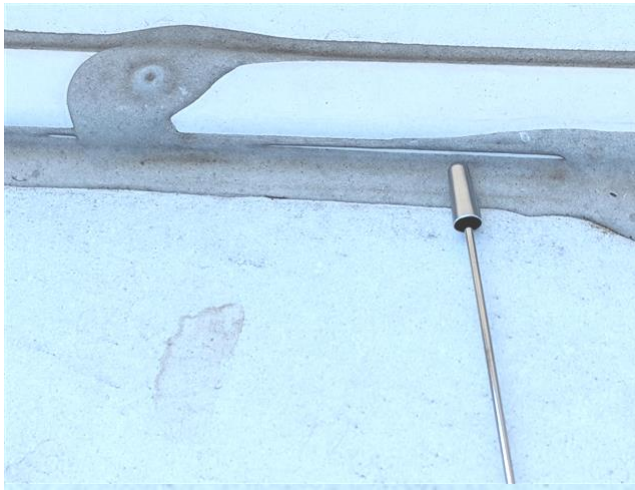
Overview of the front cap seal.

There is an area in the sealant that shows that the front cap has separated and the sealant is split. This could be a source of water intrusion. The inspector recommends that the area be addressed by a qualified RV roof technician.





17.2 Item 1 (Picture)
Front cap sealant



17.2 Item 2 (Picture)
Front cap sealant

17.16

Ladder Mounts

Acceptable



(2) A loose screw has been sealed into the sealant at the ladder base mount. The inspector recommends that the area be addressed by a qualified roof technician and the screw be removed and sealant be reapplied.



17.16 Item 2 (Picture)
Screw in sealant



17.16 Item 3 (Picture)
Screw in Sealant

22. Interior

22.17

Interior Door(s)

Poor



The interior barn door set in the master bedroom do not operate properly. There are scratches on one of the doors, and the rear door does not go over the bracket on the bottom of the first door as it is supposed to. In addition the inspector could not identify any sort of locking mechanism to secure the door during travel. The door can be manipulated closed but the inspector

recommends that the door alignment be assessed by a qualified RV technician.



22.17 Item 1 (Picture)
scratched door



22.17 Item 2 (Picture)
Rear door closed

22.19

Flooring

Fair



There are a couple of areas on the flooring that appear to have been stained or scraped with a black adhesive substance, and there is a long scratch beginning at the front of the kitchen counter toward the back of the stove. The stains should be amenable to cleaning.



22.19 Item 1 (Picture)
floor scratch



22.19 Item 2 (Picture)
floor adhesive

24(A) . Outdoor TV

24.3.A

Remote Controls

Acceptable



A remote was present but did not operate the outdoor TV. The batteries may need to be exchanged.

It is recommended that a qualified RV technician or appropriate service person investigate further and correct as needed.

Expert RV Inspections & Service LLC does not recommend any technicians or repair facilities.

All costs associated with further inspection fees and repair or replacement of item, component or unit should be considered before you purchase.

Notice / Comment

The following items indicate that the condition is a **NOTEWORTHY COMMENT**.

It is recommended that a qualified RV technician or appropriate service person investigate further and correct as needed.

If an item is unable to be fully inspected it is recommended that further evaluation by a qualified RV technician be completed prior to use.

Expert RV Inspections & Service LLC does not recommend any technicians or repair facilities.

All costs associated with further inspection fees and repair or replacement of item, component or unit should be considered before you purchase.

14. Exterior Water Systems

14.3

City Water Pressure Regulator Available

Not Present

NOTICE

(2) The inspector provided a 40-50 PSI water regulator inline with the city water hose for the purposes of testing.

15. Propane Tanks / Connections

15.1

Hoses and Regulators

Not Inspected

NOTICE

Overview of the LP tank hose(s) and regulator(s). There was a cover over the regulator which was secured by fasteners. Prior to first use the inspector recommends that the system be evaluated by a qualified RV technician for appropriateness of use.



15.1 Item 1 (Picture)
regulator inside cover

16. Electrical

16.6

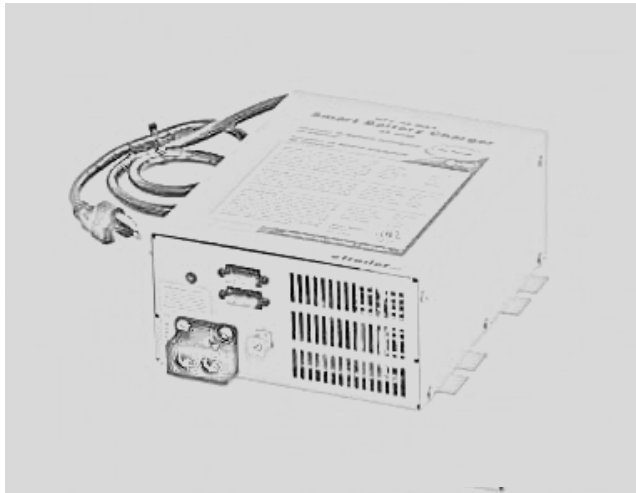
Converter

Acceptable

The inspector is unable to visually inspect the converter in most RV units.

Testing with a voltmeter while 120v AC power is ON and OFF will show if the converter is charging the 12 volt batteries by having a 0.5 volt difference.

NOTICE



16.6 Item 1 (Picture)
Typical RV Converter



16.6 Item 2 (Picture)
battery voltage external power off

30. RV Status at Inspection Completion

30.0

Overall RV Status at Inspection Completion

Acceptable

NOTICE

The inspector left the RV in the same condition as was evident upon arrival, excepting for any life-safety issues, which were either rectified by the inspector or the seller / dealer was notified of the issue(s) in question.

31. RV Inspection Completion Checklist

31.0

Motorhome Parking Brake Set

YES

NOTICE

For safety reasons, the motorhome parking brake was set even if it was not set at the beginning of the inspection.

It is recommended that a qualified RV technician or appropriate service person investigate further and correct as needed.

Expert RV Inspections & Service LLC does not recommend any technicians or repair facilities.

All costs associated with further inspection fees and repair or replacement of item, component or unit should be considered before you purchase.

Recommendations

The following items are **RECOMMENDATIONS**.

Expert RV Inspections & Service LLC does not recommend any technicians or repair facilities.

All costs associated with further inspection fees and repair or replacement of item, component or unit should be considered before you purchase.

9. Curbside Slideout(s)

9.7

Sweeps, Seals, & Gaskets

Acceptable

It is recommended the seals be checked every time a slideout is extended or retracted.

The seal and sweep on the curbside roof slide out is partially indented. The seal should be checked after every use for proper position.





9.7 Item 1 (Picture)
Typical Slideout Sweep Seal



9.7 Item 2 (Picture)
Typical Slideout Bulb Seal



9.7 Item 3 (Picture)
curbside slide out sweep



9.7 Item 4 (Picture)
partially indented front curbside sweep seal



9.7 Item 5 (Picture)
curbside slide out roof seal and sweep

9.8

Slideout Gear Rack System

Acceptable



RECOMMENDED

(2) This RV is equipped with a Schwintek slideout.

When extending or retracting a Schwintek slideout, hold the button for a full 3 seconds after fully moving the slideout in or out.

This helps the slideout adjust itself into proper alignment.

12. Streetside Slideout(s)

12.6

Sweeps, Seals, & Gaskets

Acceptable

It is recommended the seals be checked every time a slideout is extended or retracted.



RECOMMENDED



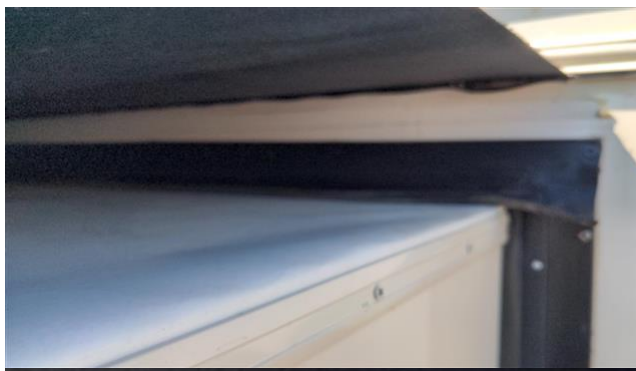
12.6 Item 1 (Picture)
Typical Slideout Sweep Seal



12.6 Item 2 (Picture)
Typical Slideout Bulb Seal



12.6 Item 3 (Picture)
slide out sweep



12.6 Item 4 (Picture)
slide out roof sweep

12.7

Slideout Gear Rack System

Acceptable



RECOMMENDED

(2) This RV is equipped with a Schwintek slideout.

When extending or retracting a Schwintek slideout, hold the button for a full 3 seconds after fully moving the slideout in or out.

This helps the slideout adjust itself into proper alignment.

14. Exterior Water Systems

14.2

City Water Connection

Acceptable

City water connection.



RECOMMENDED

While clearly labeled, the city water connection is black in color, while convention usually has it white in color. The inspector recommends the owner not confuse this inlet with the black tank flush inlet.



14.2 Item 1 (Picture)
city water connectioncity water connection



14.2 Item 2 (Picture)

14.3

City Water Pressure Regulator Available

Not Present

(1) A pressure regulator is recommended for all city water connections. If not installed, this can cause possible bursting of fresh water lines which may cause significant damage to the unit.



14.4

City Water Food Grade Hose Available for Test

Acceptable

(2) It is recommended that a white or blue food-grade hose always be used when connecting to a city water supply.



14.6

Black Tank Flush Connection

Acceptable



The black tank flush connection overview.

The black tank flush connection is white in color, when the convention is generally that the black tank flush is black. The inspector recommends that the owner be very familiar with operation of the flush and not have himself or others inadvertently connect a water hose thinking this is the city water inlet.



14.6 Item 1 (Picture)
black tank flush valve

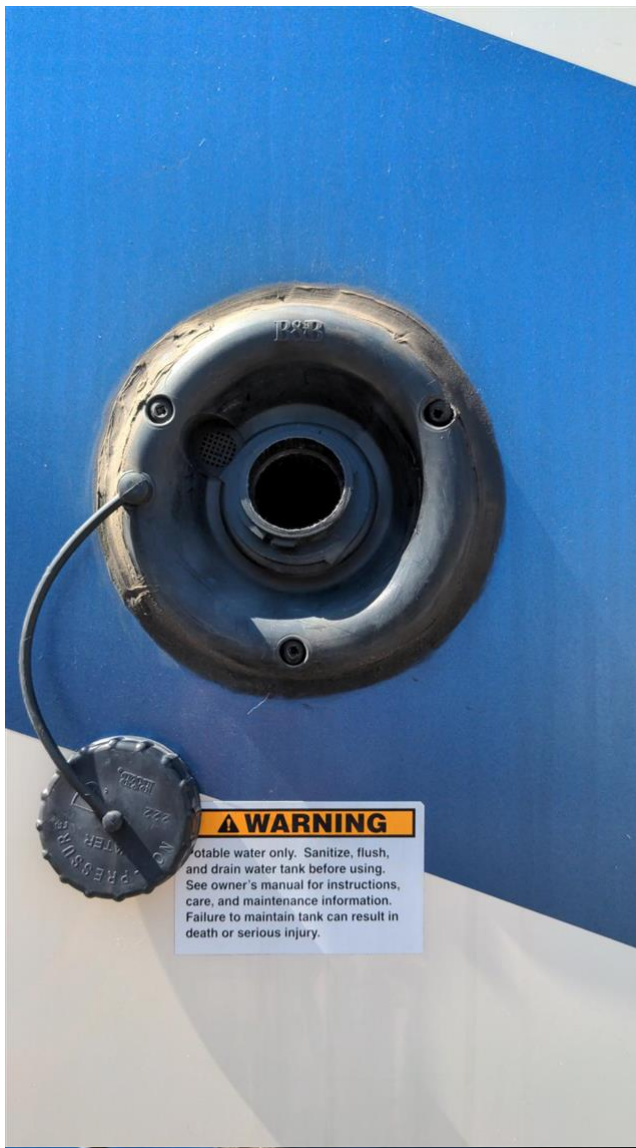
14.11

On-Board Water Tank / Fixtures for Tank Fill

Acceptable

Overview of the onboard tank fill. It is located street side on the rear of the coach sidewall. Again, convention has potable water inlets as white in color, not black.





14.11 Item 1 (Picture)
on board gravity water fill

16. Electrical

16.3

Electrical Panel Box

Acceptable

Overview of the electrical panel. The inspector recommends that the owner familiarize themselves with the electrical panel in that it is very close to the ground and can be difficult to access unless one is lying flat on the ground.





16.3 Item 1 (Picture)
electrical panel boxelectrical panel box



16.3 Item 2 (Picture)
electrical panel box wiring

16.19

Transfer Switch

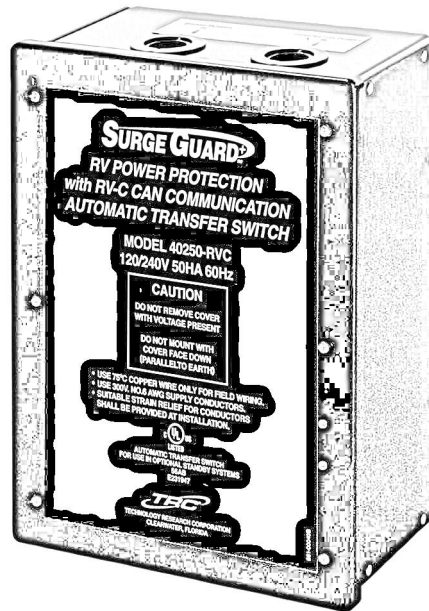
Acceptable



The inspector is unable to visually inspect the transfer switch as it is not accessible for inspection.

In case of a transfer switch failure and to protect the electronics in the RV, it is recommended the shore power be unplugged before starting the generator.

For the same reason, it is recommended the generator be turned off prior to plugging the power cord into shore power.



16.19 Item 1 (Picture)
Typical RV Transfer Switch

Expert RV Inspections & Service LLC does not recommend any technicians or repair facilities.

All costs associated with further inspection fees and repair or replacement of item, component or unit should be considered before you purchase.